

Historic, Archive Document

Do not assume content reflects current scientific knowledge, policies, or practices.

1 9 2 8



Spring Catalogue

**GROWERS' SALES COMPANY
CLINTON ~ NEW JERSEY**

ABOUT YOUR ROSE GARDEN

Roses will endure poor conditions and flower when the conditions are adverse, but the success which follows proper preparation makes it well worth your while to take the time and trouble to thoroughly prepare your rose bed.

Deep preparation of the soil is necessary if you would insure root prosperity; the ground should be dug up, thoroughly stirred to a depth of not less than eighteen inches. Mix plenty of well rotted manure with the soil, about one-third the bulk; if this is not available, work in a large trowelful of bonemeal, or sheep manure to each plant.

If the ground is soggy or wet, drainage must be provided. Roses want plenty of water passing through the soil, but will not stand "wet feet"; soft coal cinders, broken crockery or stones in the bottom of the bed will take care of the drainage.

Be sure to dig the hole large enough to permit the roots to be spread out in a natural growing position; before setting the plants, carefully cut off any broken or mangled root ends with a sharp knife; cut the tops back to not more than 3 to 6 eyes, or buds. This will insure a good growth of new wood on which the flowers of the Tea Roses are produced. (This does not apply to Climbers, as they make flowers on the second year's growth.) Now set the plants about 2 inches deeper than the crown from which the shoots arise, spread out the roots carefully and fill in with fine earth, firming it down with the hands. When the hole is full, stamp the soil firmly with the feet, as roses will not do well if loosely planted.

Follow these suggestions in preparing your roses for planting and we believe you will be richly rewarded for your time and labor in the increasing number and beauty of their blooms.

Yours for more and better roses,

GROWERS' SALES COMPANY

YOU, TOO, WILL BE PLEASED WITH OUR ROSES

Narberth, Pa.

Growers' Sales Co.

Sometime ago I purchased three (3) rose bushes (yellow) from you as advertised three for \$1.00.

I want to let you know that they are such beautiful roses that if it is not too much trouble, will you send me the name of the rose. All the bushes have grown nicely and all have bloomed. The roses are intensely fragrant, and a most beautiful yellow. I am certainly very well pleased. Thanking you for the trouble, I am—Mrs. E. K. W.

Phoenixville, Pa.

Growers' Sales Co.

Very well pleased with roses purchased in April, two Ophelias, one Mme. Butterfly, all have bloomed. One Ophelia has bloomed fourteen (14) roses, and more buds on bush at present time.

On June 27 another shipment received, three red Crusaders, and two Killarney —1 Pink, 1 White—they all bloomed beginning of August. Now they are all blooming again.

Thinking that you would be interested to know that your new customer is delighted.—S. A. F.

BARGAIN LIST OF CHOICE ROSES

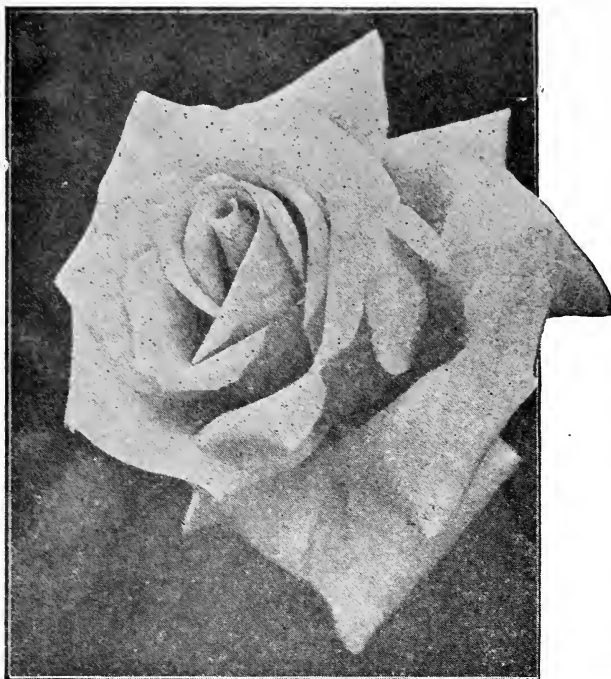
69c

EACH

Values up to \$1:50

The roses listed on this page are varieties of which we will have a limited quantity of from about a hundred to three hundred of a kind this being insufficient to list at regular prices, \$1.00 to \$1.50, we make this special 69c offer to dispose of them quickly, and at the same time give you the opportunity to secure some very fine roses at half regular prices.

As long as the list is complete we will ship varieties as ordered; on any varieties sold out we will substitute the variety in stock which is the nearest in color and habit to the ones ordered. All roses 2 year old, field-grown.



Orders Filled in Rotation as Received so Order Early

- | | | | |
|--|--|---|--|
| Anne De Diesbach—Pink. | Gruss An Teplitz—Scarlet. | Margaret Dickson Ham-mill—Delicate creamy yellow. | Margaret Dickson—Delicate creamy yellow. |
| Betty—Coppery rose. | Hermosa—Pink. Very popular. | Miss Amelia Gude—Deep yellow, shading to cream. | M. P. Wilder—Crimson. |
| Braircliff. | Hoosier Beauty—Glowing scarlet. | Mme. Alexandria Dreux—Lively shade of orange-yellow. | Mrs. John Laing—Soft pink. |
| Baroness Rothchild — Pale flesh. | H. V. Machin—Black-grained scarlet-crimson. | Mme. Butterfly—Bright pink. | Ophelia—Salmon-flesh. |
| Constance—Golden yellow. | J. B. Clark—Crimson. | Mme. Caroline Testout—Rich pink. | Pharisaer—Rosy white. |
| Clio—Flesh color. Very large. | Lady Alice Stanley—Outside of petals coral-pink, inside pale flesh-pink. | Mme. Leon Paine—Silvery flesh-pink, center yellowish orange. | Premier — Clear, pure shade of rose-pink; very fragrant. |
| Edward Mawley—Deep crimson. | Lady Ashtown — Pale rose. | Mme. Ravary—Orange-yellow. | Paul Neyron—Pink. |
| Francis Scott Key—Deep red. | La France—Rose pink. | Mrs. Aaron Ward—Yellow. | Rose Marie—Clear rose-pink. |
| Frau Karl Druschki—White. | Lady Ursula—Flesh-pink. | Mrs. Ambrose Ricardo—Pale golden yellow. | Soleil D'or—Reddish gold. |
| General McArthur—Scarlet red. | Laurent Carle — Deep rosy crimson; large, full flowers. | Mrs. A. R. Waddell—Scarlet buds. | Templar—New. Crimson-red. |
| George Dickson—Black crimson. | Louise Catherine Breslau—Coral-red, shaded with chrome-yellow. | Mrs. MacKellar—Saffron-yellow. | The Queen Alexandre Rose—Scarlet on inside, yellow on outside of petals. |
| Gloire Lyonnaise—White, tinted yellow. | Lulu—Orange, salmon, and pink. | Mrs. Weymess Quinn—Canary-yellow, shaded with crimson-orange. | Ulrich Brunner—Large red. |
| General Jacqueminot — Bright crimson. Free blooming. | Maman Cochet — Rich coral-pink. | | White Cochet—White. |
| Golden Ophelia—Similar to Ophelia, with a golden yellow suffusion. | | | Willowmere — Shrimp-pink. |
| Georgeous—Deep orange yellow. | | | William R. Smith — Creamy white, suffused with bright rose-pink. |

69c Each

\$6.00 for 10

\$55.00 per 100



Souvenir De Claudius Pernet

The New \$2.50 Yellow Rose

A real sensation, this new Yellow Rose has sprung into immediate popularity. A clear shining Sun-Flower Yellow without a trace of the orange yellow found in such varieties as Sunburst, Mrs. Aaron Ward, etc. It should be in every rose garden and you here have the opportunity to secure it at a ridiculously low price. We are making a special this year of this rose. Never before sold below \$2.50 each.

Our Special Price \$1.35 Each, 10 for only \$12.00

Three Great Yellow Roses

Lady Hillington

Buds of remarkable elegance, of good size, opening into flowers of clear apricot-yellow, shaded to orange on the outer edges of the petal. A good cut flower variety, as the color does not fade after the bloom is cut. A strong hardy, healthful grower. \$1.00 Each.

Sunburst

Buds long and pointed, borne singly on long, stout stems, opening full and double. A very vigorous grower, reddish bronze foliage. The color is superb orange copper or golden orange, with a deep orange center. This Rose creates a sensation wherever grown. \$1.00 Each.

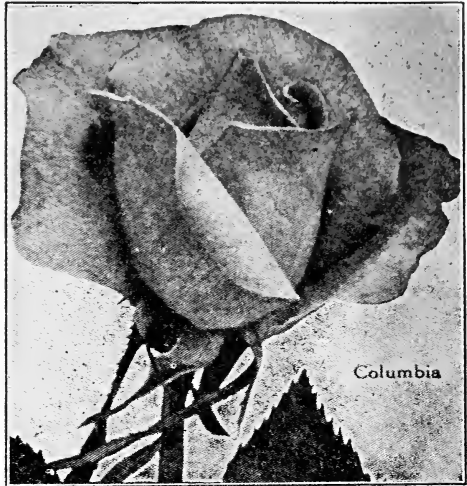
Miss Lolita Armour

An American Rose of high merit; won the Paris prize in 1921, one of the highest rose honors in the world. Its fragrant blooms develop from well-shaped buds, chrome yellow at the base, shading to copper and orange hues on the reverse of the petals, and with much of the characteristic copper and shrimp pink tints in its makeup. \$1.00 Each.

Special the 3 Great Yellow Roses for only \$2.50

NEW ROSE COLUMBIA

A Hybrid Tea of wonderful blooming qualities as free a bloomer as any Tea Rose; blooms all the time. Is almost thornless. Color is a deep peach-pink, deepening into a glowing pink, a perfect color. An exquisite rose for cutting; produces handsome buds on long stiff stems. Hardy as an oak, it thrives in any location, and soon makes a wonderful display. It is remarkably free from the attack of disease or insects. Introduced in 1917, it has become one of the most generally planted garden roses. Be sure to add this great rose to your collection this season. Each \$1.00.



All 6 Roses on this page
(Value\$6.00) for only \$4.95

JULIET

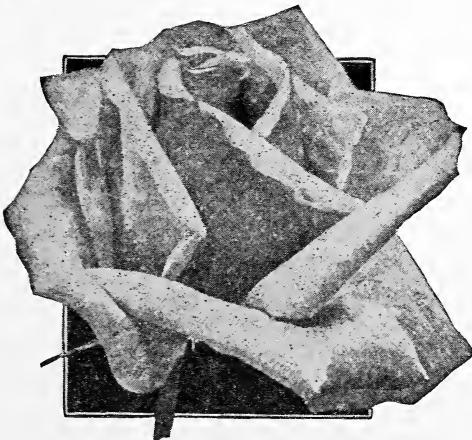
Color old gold and red. An odd but charming color combination. Be sure to add this one to your order. We have priced it so you won't fail to do so. Our Special price Each, \$1.00.

DUCHESS OF WELLINGTON

Large, well-formed buds, opening to saffron-yellow flowers, stained with crimson and changing to lighter yellow. Very sweetly perfumed. A vigorous grower. Can be depended upon to produce flowers all season. One of the roses necessary in any collection. Each \$1.00.

CRIMSON EMBLEM

Semi-double bright red flowers. Strong sturdy grower, free bloomer. Makes a well-formed bush. Hardy in any location. A \$1.50 rose. Our special price \$1.00 Each.



Jonkherr J. L. Mock

JONKHERR J. L. MOCK

A very strong grower, blooming as it does with the greatest freedom, producing flowers extra large and well shaped which retain their perfect formation in full bloom. Color, clear imperial pink. Produces a sensation wherever grown. Each \$1.00.

MY MARYLAND

A brilliant, lovely shade of pink. Perfectly double flowers of immense size are produced all through the summer in great profusion. A sturdy grower, the fine shaped bush itself is and ornament to any garden. A great outdoor rose. \$1.00 Each.

KAISERIN AUGUSTA VICTORIA



The greatest hardy, white Hybrid Tea Rose in existence. A strong, sturdy grower; free flowering it has become the most popular of all white roses for general planting. Blooming from early spring to late fall, with pointed buds, the large double flowers are glorious in their perfection; borne on long stiff stems; delicate pure white; deliciously fragrant. Unexcelled for cutting; absolutely hardy. There is nothing finer than this glorious white rose. Special price, \$1.00 Each.

Golden Emblem

Rich golden yellow. The golden being more pronounced than in most varieties. One of the very best of the newer yellows that have been thoroughly tested. Has been selling at \$2.00 to \$2.50. Our price, Special \$1.10 Each.

Kaiserin Augusta Victoria

Three Red Roses of Unusual Merit

ETOILE DE FRANCE

Well-formed buds that develop into full open flowers of red and soft velvety crimson, shading to vivid cerise. One of the very best and most dependable red roses not subject to insect attacks. Should be in every garden. Special price. Each \$1.00.

Mme. Edouard Herriott

Coral-red shaded yellow to scarlet an extraordinary coloring which demands instant attention. Each \$1.00.

Mme. Eugene Marlette

Brilliant shade of red. A good companion rose to Mme. Herriott. Both are a real addition to any rose garden. Each \$1.00.

All 3 For Only \$2.65

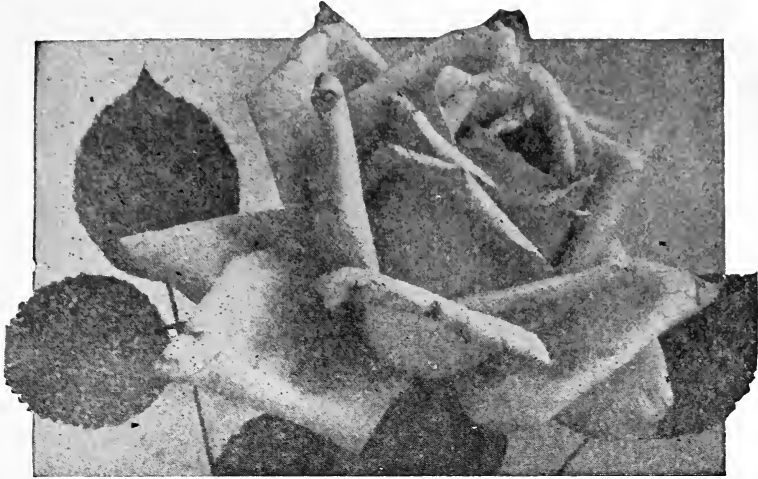
Cheerful

A bright cheerful orange color which probably is responsible for its name. One of the better roses. Our Special price. Each \$1.00.

Commonwealth

Solid deep pink color. Buds large, long, pointed. Flowers open large, double, very lasting. Regular \$1.25 rose. Our Special price. Each \$1.00.

EXTRA SPECIAL—The 7 Roses described above (value \$7.10) will be mailed for only \$5.95, postpaid.



Rose America

ROSE AMERICA

One of the newer Hybrid Tea Roses, a cross between Premier and Hoosier Beauty. Very fragrant, color rose pink. Buds of great length and pointed, opening into an enormous flower from 4 to 6 inches in diameter, and borne on long, stiff stems, making it an ideal cutting variety. Vigorous grower and free bloomer. Resembles Columbia in color and form of bud.

Very Special at \$1.25 Each, 3 for \$2.95

Five Glorious Red Roses

Red Letter Day

A velvety brilliant glowing crimson. Bud opening into Cactus-like flower producing a rose of exquisite grace and charm. A strong grower and a wonderfully free bloomer. Awarded S. G. Medal by the National Rose Society.

Richmond

Scarlet-crimson flowers are borne on long stiff stem. The roses are immense and produced in great profusion. A bed of Richmond is a wonderful sight in their dazzling brilliance, rivaling if not surpassing the American Beauty.

ROBIN HOOD

A rosy-scarlet that is soft, bright and lasting. A monthly rose with an immense bloom as large as the June roses. Strong, free bloomer.

Crusader

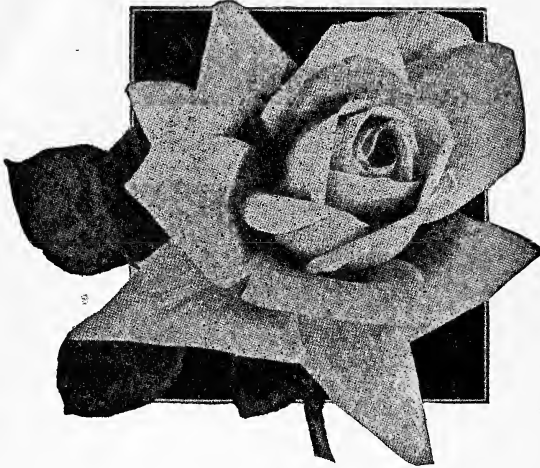
Color rich velvety crimson. Buds and blooms immense and of great substance, very full and double and the largest rose of its color we have yet seen. A big, strong grower soon produces a rugged bush loaded with the finest blooms that can be grown. Foliage heavy and free from disease. Hardy and a profuse bloomer.

Hadley

A deep velvety-crimson, retaining its brilliancy at all seasons of the year. It is much used for hot house forcing and is equally desirable out of doors. The variety is double and buds are well-formed. A thoroughly desirable rose in every way.

All of the Glorious Red Roses \$1.00 Each. All 5 for only \$4.15

ROSE LOS ANGELES



Los Angeles

The first American Rose to obtain the world-wide recognition of the Paris award. Flowers luminous flame-pink toned with coral, and shaded with translucent gold at the base of the petals. Fragrant as an American Beauty. The plant is of vigorous growth and blooms freely all during the growing season. Has become an invaluable garden rose. A \$1.50 rose.

OUR PRICE \$1.25 EACH

OLD GOLD

The wonderful color, which is entirely distinct from and not found in any other Rose, a vivid orange-red, with coppery-red and apricot shadings, opening bright salmon, and which is further set off by the healthy, glossy, bronze-green foliage; delightfully fragrant; a vigorous grower and very free-flowering. Our price, Each \$1.10.

TWO GLORIOUS ROSES

Both Should Find a Place in Your Rose Garden

PINK AND RED RADIANCE

These two grand Roses are an exact counterpart of the other, except in color; the Pink Radiance is a brilliant rosy-carmine, displaying beautiful rich opaline-pink tints in the open flower; Red Radiance is a splendid even shade of clear red, without a trace of any other color, retaining its vividness for an unusually long time after being cut. Both are strong, sturdy growers, constantly in bloom, and are two of the leading roses. We cannot say too much in their praise.

We have arranged to sell thousands of these glorious companion roses this spring, bringing them to you at such a low price that you surely will not pass them by. Regular price \$1.50 each.

Our Special Price \$1.00 Each. Both for only \$1.65

What a Few of Our Customers Say About Our Roses

Wilmington, Del.

Perhaps you may be interested in the following note concerning goods purchased from you:

On May 29, received a Golden Ophelia Rose Bush from you and planted same day. Saturday last July 10, exactly six weeks later it produced a perfect flower—perfect in every respect—which, in my opinion, speaks for itself of the quality of your products. Furthermore, the bush gives every indication of producing very abundantly throughout the remainder of the season. The bush is the envious admiration of all who see it.—C. S. J.

Reading, Penna.

Am in receipt of rose bushes I ordered and want to say that I am pleased in a hundred ways with them.—H. R. R.

Hazleton, Penna.

The Mme. Butterfly rose, I bought from you grew fine, the first blooming I had about 37 roses. It has sprouted out again and has 43 roses again or a total of 80 roses so far and I think before the cold weather sets in I will have many more.—J. S.

THE LOVELY KILLARNEY ROSES



PINK KILLARNEY
Queen of the Irish Roses

PINK KILLARNEY

This queen of the Irish Roses created a sensation when it first came out by reason of its long, pointed buds, opening into large blooms of lovely flesh color, shaded white, suffused pink, and deliciously perfumed. Each season it was introduced Killarney has increased in popularity and the demand has always exceeded the supply. Killarney is unusually hardy and without protection has withstood severe winters as far north as Boston. Each \$1.00.

WHITE KILLARNEY

An offspring of the Pink Killarney, and is one of the most exquisite white roses grown. The long, full buds are handsome in shape and the full open flower is equally beautiful. Each \$1.00.

KILLARNEY BRILLIANT

An off-spring of the Pink Killarney, but a beautiful shade of brilliant red. Same habit as the other Killarneys and as free a bloomer. Each \$1.00.

The 3 Lovely Killarney Roses, For Only \$2.65

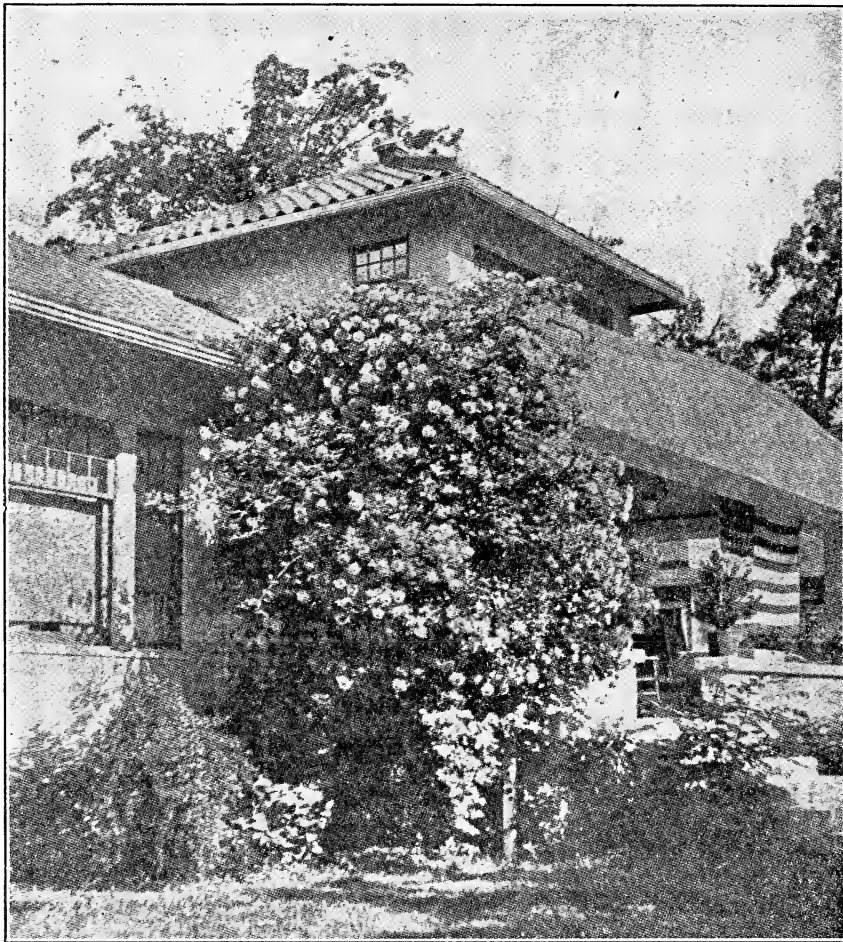
Three Great American Beauty Roses

CRIMSON AMERICAN BEAUTY—This well-known rose hardly needs to be described. A rich charming crimson; it is beyond compare, attaining its full beauty when the bloom is fully expanded. The most fragrant of the roses.

PINK AMERICAN BEAUTY (George Arends)—A strong, robust grower, makes a sturdy bush, a free bloomer, and absolutely hardy everywhere. A fit companion rose to the white and Crimson American Beauties. A delicate pink, delightfully fragrant.

WHITE AMERICAN BEAUTY (Frau Karl Druschki)—The very highest type of white rose. Marvelously white its color is absolutely without a tinge of yellow or any other shade. A very strong grower, it is perfectly hardy everywhere, and the glorious flowers are of immense size and are produced in profusion on long stiff stems.

Big, strong 2 year plants, 75c Each. All 3 for only \$2.00



CLIMBING AMERICAN BEAUTY

The Wonder of Roseland

A Beautiful Rose. One plant will produce twenty times as many blooms as the old American Beauty. Over nine hundred blossoms and buds have been counted on one four-year-old bush. The roses grow on single stems and measure three to four inches in diameter. It is perfectly hardy, and the foliage is green and beautiful until the snow flies. It is a worthy ornament to any garden and its beauty and fragrance will prove a lasting pleasure. If you are a lover of roses, do not fail to plant it. The illustration will convey some idea of its beauty. You can't have too many Climbing American Beauties.

Plant it wherever you have place for a climbing Rose. If you think you have no place for a climber make one, for no other plant will give so much beauty with such little care and expense as this wonderful rose.

Usually sold at \$1.00 we are making an advertising special of the Climbing American Beauty this spring. We want every customer to have at least one as we know of no other plant that will give such permanent satisfaction.

Our Special price 79c Each. 3 for \$2.25

THE THREE FAMOUS DOROTHY PERKINS CLIMBING ROSES



Dorothy Perkins

DOROTHY PERKINS

Extremely hardy. The flowers are borne in clusters of from six to ten and are very double, with prettily crinkled petals. Remarkably pretty pointed buds, clear shell pink in color, lasting a very long time. The flowers are sweet scented.

RED DOROTHY PERKINS (Excelsa)

The color is an intense clear crimson-maroon, with tips of petals tinged scarlet. Flowers are full and double, produced thirty to forty on a stem, and almost every eye on a shoot produces a cluster of bright blossoms.

WHITE DOROTHY

A pure white sport of the Dorothy Perkins, of the same habit of growth and freedom of flowering; a splendid companion for the pink variety as it flowers at the same time.

Special 60c Ea. 3 for \$1.45

CLIMBING MONTHLY ROSES

Climbing Gruss An Teplitz

This great rose is a valuable addition to the Climbing Monthly Roses, being an exact counterpart of the bush rose but is a sturdy climber, attaining a height of 10 to 15 ft. in a single season. It is a dazzling sheet of velvety crimson when it first blooms in the spring and produces blooms throughout the season.

Each \$1.00 3 for \$2.75

Climbing Lady Ashtown

Strong, rapid grower, producing large delicate pink flowers in abundance.

Each \$1.00 3 for \$2.75

Climbing Orleans

A hardy climbing rose combining the ever-blooming qualities of the Baby Rambler with the climbing habit, making it one of the best and most popular climbers. Bright geranium pink.

Each 85c 3 for \$2.45

Climbing Los Angeles

A New Climber which will prove as big a sensation as did the bush rose Los Angeles. The same characteristics in every way; the same luminous flame-pink color. If you know the Los Angeles you'll surely want this climber.

Special price \$1.50 3 for only \$4.15

Climbing Sunburst

Orange copper and golden yellow flowers of large size and perfect form.

Each \$1.25 3 for \$3.35

All 5 Monthly Climbers (Value \$5.60) for \$4.95

TWO UNUSUAL CLIMBERS



Yellow Rambler Rose

YELLOW RAMBLER

You will surely want this beautiful Rambler, producing as it does large clusters of double golden-yellow flowers in great profusion. A strong, hardy, vigorous grower; it makes a great show; in full bloom its solid mass of beautiful glowing golden-yellow demands instant attention.

Each 75c, 3 for \$1.95

BLUE RAMBLER

The Blue Rose is a sport of the Crimson Rambler, and is one of the most rampant growers we have ever seen, covering a large porch in a single season. The flowers are borne in loose clusters and are a delightful shade of blue, something entirely different from any rose now in cultivation. A recent introduction that will be a real addition to your rambler collection.

Each 75c, 3 for \$1.95

BOTH FOR ONLY \$1.35

FOUR OF THE BEST CLIMBERS

American Pillar

A very vigorous grower the bush is clothed in lively green from earliest spring 'til late fall. The flowers are produced in great profusion, fairly cover the bush. Color bright pink. Each 75c, 3 for \$2.00

Bess Lovett

The flowers are clear, bright red, of good size, resembling the bloom of the American Beauty but much brighter in color. The large glossy foliage, like that of Silver Moon, of itself makes it a worthy ornament to any garden. Each 75c, 3 for \$2.00

Silver Moon

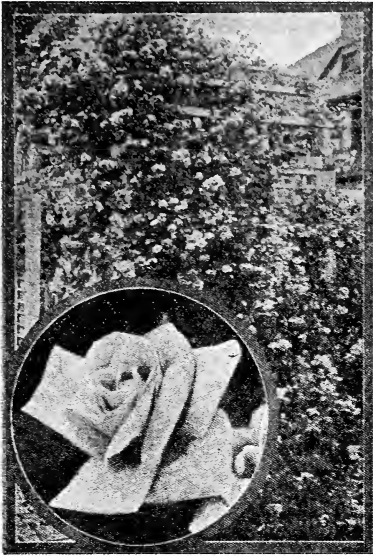
A pure white climber, blooms very large, four or more inches in diameter, beautifully cupped, forming a clematis like flower. The large bunch of yellow stamens in the center makes it very attractive. Each 75c, 3 for \$2.00

Mary Wallace

Flowers very large usually exceeding 4 inches. Blooms freely in the spring and bears a considerable number of fine buds during the summer. Canes are unusually strong, making a self supporting plant 6 to 8 feet high. Clear rose pink, with a salmon base. Each 75c, 3 for \$2.00

All 4 for only \$2.75

PAUL'S SCARLET CLIMBER



The sterling qualities of this great rose will win for it a reputation beyond that of any other Crimson Rambler; a strong grower, it soon makes a good display; and for brilliancy of color it is beyond compare—a bright, flaming scarlet. The petals do not fade like many climbing roses, but retain their bright color, and remain in bloom for from two to four weeks. After done blooming, its bright foliage, which is free from mildew and disease, as well as insects, still makes it a worthy ornament to any garden. Special 75c Each, 3 for \$1.95

DOCTOR VAN FLEET

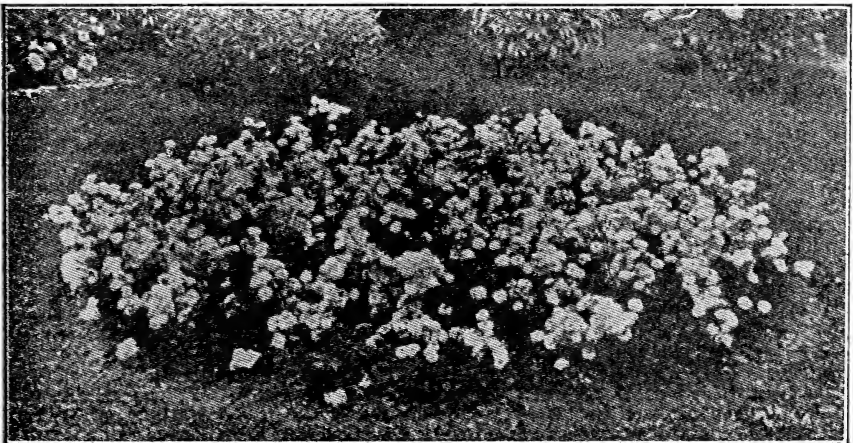
One of the newer types of Climbers with flowers as the Tea Roses. This variety shows a mass of beautiful, clustered buds, which open out into large, shapely flowers, with stems 12 to 18 inches long, flesh-pink. Each 75c, 3 for \$1.95

Baby Rambler Roses

Bloom Profusely from June till Frost

This splendid class of roses are ideal for planting along walks, driveways, and in beds where a low growing bush is desired, as they are of a dwarf habit, rarely growing more than 12 to 15 inches in height. Keep the dead flowers cut off and encourage new bloom. Absolutely hardy, they bloom all summer and until frost. Three colors: Red, white, or pink.

Special 60c Each. Dozen \$5.95



A Bed of Baby Ramblers



SENTINEL New \$3.00 Exhibition Gladioli

We have just about a thousand of these famous bulbs, blooming size, 1 inch, to offer this Spring. Be sure of yours. Order early. Large bold flowers. Salmon-pink, with darker feathering and crimson blotch on cream ground. A very unusual variety.

Very Special at \$1.00 per Bulb—3 for only \$2.50

Choice Gladioli at Bargain Prices

HERADA

Purest lavender mauve, deeper in the throat. Immense blooms of glistening lustre. In a class by itself. 80c per Dozen, \$6.00 per 100.

PEACE

A grand pure white flower with just a slight marking of a lilac feather on the lower petal. The plant is very robust, 5 feet high and shows enormous flower well placed all along the stem.

Special 60c per Dozen

\$4.50 per 100

\$35 per 1000

ALTAIR

Extra tall in growth; color salmon-saffron, an entirely new shade and very beautiful; early. Per dozen 75c; \$5.50 per 100.

LILY WHITE

One of the leading varieties for cut flower purposes. Pure white with lavender markings in the throat; early blooming. 75c per Dozen, \$5.50 per 100

E. J. SHAYLOR

Deep rose pink to rose color. Throat of lower petals delicately penciled rose-red. Undoubtedly one of the very best gladiolis ever introduced. A very popular cut flower, a vigorous grower, fine in form and color. Per dozen \$1.00; per 100 \$7.50.

MARY PICKFORD

Wonderful creamy white with handsome heavy spikes. Per dozen 75c; \$5.50 per 100.

1910 ROSE

Extra large flower, color pure rose pink, exceptionally fine, early and a good forcer. Dozen 75c; \$5.50 per 100.

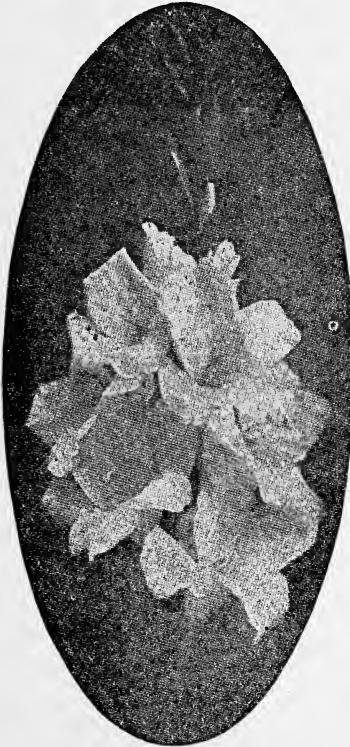
GRETCHEN ZANG

White, suffused La France pink, shading to a geranium-pink on tips of petals; lower petals blotched scarlet-red. An exceptional cut flower variety. Dozen \$1.00; \$7.50 per 100.

YOU CAN'T BEAT THIS

Peckville, Pa.

This spring I bought Gladioli bulbs from your Sales Co., and they bloomed in time for me to put a basket in the opening of the Bank. They were the best and largest blooms anywhere around here. Everyone wanted to see them. I think I had all colors but blue. Thought you would like to know about them.—Mrs. M. H.



Two Pink Gladioli of Distinction

ALICE TIPLADY

Bittersweet-pink, suffused scarlet at outer edges and reverse, throat buff-yellow, etched scarlet. Commonly called Orange-Saffron. Strong grower, one of the best for both landscape growing and for cut flowers. Dozen \$1.00, \$8.00 per 100.

LE MARECHAL FOCH

One of the most wonderful novelties; flowers of enormous size and beautifully ruffled. Color salmon pink, flaked and striped deeper at edge of petals. It is a most unusual flower and immensely popular.

Very Special \$1.00 per Dozen, \$8.00 per 100

UNNAMED GLADIOLI

IN SEPARATE COLORS

Carefully selected bulbs for those who wish to make a planting of solid colors at a low cost, and are not particular as to name, as long as they secure the color desired. White, Red, Pink, Yellow.

20 Choice Bulbs, Any Color \$1.00

\$4. per 100 \$35. per 1000

SUPERB GLADIOLI MIXTURE

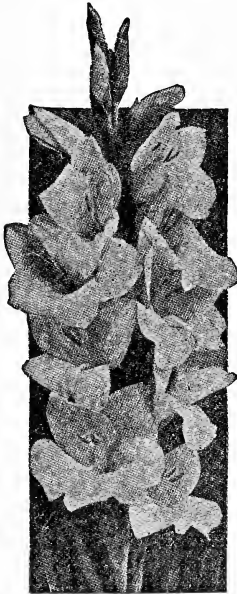
A superb mixture of fine, choice, all blooming bulbs in a wide range of colors. Unsurpassed for its variety of coloring and general excellence, in fact, many of our customers wrote us last year that they secured better results from this mixture than from any named sorts for which they paid high prices. It is a mixture that will surely please you.

30 Choice Bulbs \$1.00

\$3. per 100 \$25. per 1000

A WORD ABOUT PLANTING GLADIOLI

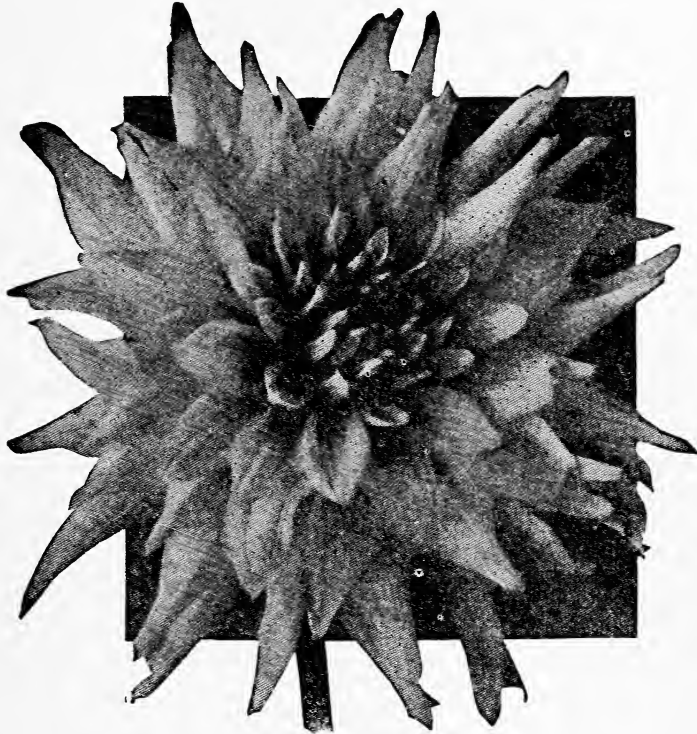
In every garden there should be rows and rows of these wonderful flowers. A wealth of bloom requires a minimum of labor and expense, their freedom from insect pests assures success to everyone, and their glory and charm repays all efforts. Any rich, light garden soil will grow Gladioli if properly worked in preparation and exposed to the benefit of full sunlight. Bulbs should be planted from the middle of April on into May and June for a succession of bloom. Set bulbs 2 to 4 inches deep and two inches apart in the drills, single rows 12 inches, and double rows 18 inches apart.



DAHLIAS

Why Not a Dahlia Garden of Your Own?

A garden from which you can cut flowers of the most exquisite forms and colors from early in the season till late fall. You can have such a garden easily and inexpensively; any ground that will grow good potatoes will grow good Dahlias, and we will supply many fine varieties at low cost. After spading the ground, plant the Dahlias about four inches deep and not less than two feet apart. Keep the ground free from weeds, and water during the warm hot days of August. As the buds begin to appear, sprinkle a little bone meal around the base of each plant, but not over three ounces to the plant. Dahlias will bloom at their best about 70 days after planting, so to get a continuous supply of top-notch bloom, plant a few every two or three weeks until July 1st.



35c

EACH

COLOSSAL CACTUS
DAHLIAS

(Values Up To \$1.00 Each)

35c

EACH

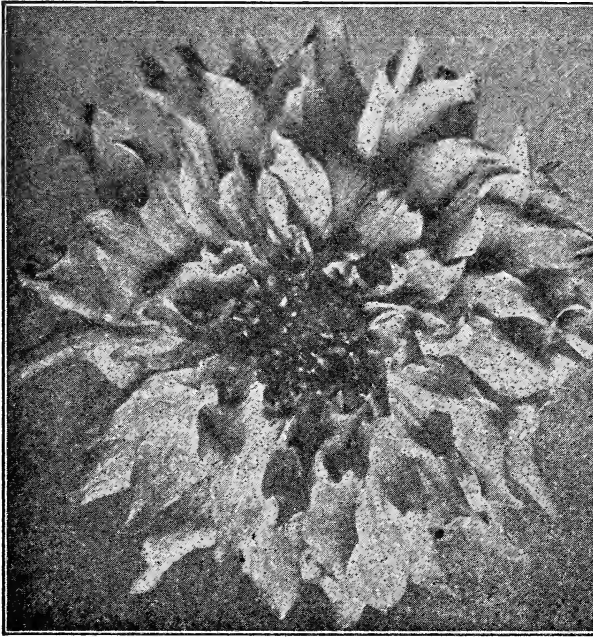
ANY 12 FOR \$3.45

ALL 25 FOR ONLY \$6.25

ATTRACTION. Very large elegant flowers of a clear, lilac-rose color. Flowers frequently measure ten inches in diameter under proper cultivation. It has been awarded first-class certificates wherever shown. The wavy effect produced by the petals is marvelous and must be seen to be appreciated.

BETTY AUSTIN (Cactus.) The absolutely perfect Dahlia. A Hybrid Cactus that is in a class by itself. One more year has only demonstrated that all over the country it is one of the earliest to bloom, a free and continuous bloomer. The flowers are full to the centre up to frost. Color, yellow at base of petal, blending to carmine and rose, yellow at tips; reflex rose. The flowers are medium to large, about seven inches in diameter. The plant is a quick grower of branching habit, about three to four feet high. A wonderful commercial cut flower and an ideal garden plant. It is entirely distinct and worthy of a place in every collection. \$1.00

BREAK O'DAY. A new giant flowered Dahlia that should be in every collection. Its immense size is relieved by a beautiful irregular formation and its soft color. A delicate clear sulphur yellow, tinting to sulphur white at the tips. The petals are of great substance, illuminated by a satiny sheen, giving the flowers a waxy appearance. A strong vigorous grower and free bloomer with long erect stems. An acquisition. Regular price 50c.



CANDEUR. Large white, a strong vigorous grower and an early and profuse bloomer. Long stiff stems.

COUNTRY GIRL. Soft yellow suffused with golden amber.

EARL OF PEMBROKE. Rich plum, petal pointed rather broad. An old favorite.

ETENDARD DE LYON. Massive yet graceful blooms on strong stems. Color reddish violet or rich carmine rose.

FRANCIS WHITE. A splendid new white cactus of exquisite form with long narrow incurved and twisted petals. Large size, 5 to 7 inches across, borne on long graceful stems. Color pure white shading to sulphur at center. An early and extremely profuse bloomer. One of the best for garden and exhibition.

GENERAL PERSHING. A very large creamy white hybrid cactus, with curved and twisted petals. A strong vigorous grower and profuse bloomer. Color white with cream shadings at center.

GOLDEN GATE. Bright golden yellow shading to sunset gold at the center; blooms can be grown ten inches in diameter.

H. SHOESMITH. Brilliant vermilion scarlet. Splendid form, long slender quill petals.

J. H. JACKSON. Very large, rich velvety maroon, a strong vigorous grower and free bloomer.

KRIEMHILDE. Deep cerise pink, tinting to creamy pink at center. A distinct and valuable variety as the flowers keep a long time after cutting.

LAWINE. A magnificent flower on long stems. A large white, lightly suffused pink. A strong vigorous grower, early and profuse bloomer. One of the best for commercial cut flowers and for the garden.

MADONNA. A lovely flower of pure snowy white, truly a distinctive white Dahlia of exceptionally good form.

MARJORIE CASTLETON. The best standard pink Cactus Dahlias. It is much softer than most of the pinks, and is an early continuous bloomer. The color is soft rosy pink, tinting lighter toward the center. It is a very rapid grower, with good stems and keeps well after cutting.

MINA BURGLE. One of the best, rich cardinal red of fine form and produced freely on long stiff stems. Plant is a strong vigorous upright grower and profuse bloomer.

MME. ESCHENAUER. An ideal Dahlia of exceptional merit. Most pleasing and effective color, being yellow at base of petals, passing to creamy white, suffused and tipped pale lilac. Delicate and chaste.

MRS. LEO NIESSEN. Without question the very best cactus dahlia of its type and color. It is not only very bright and effective in early and midseason, being produced profusely on stiff stems, but late in the season, when so many varieties come open centered, it is always full and perfect. Color, a beautiful shade of scarlet red, blending to peach red at center of flower, with bright yellow at base of petal and at tips; reflex sulphur yellow veined and suffused pale, peach red. A splendid bright, rich Autumn combination, at once most pleasing and effective. The plant is a very strong vigorous grower and profuse bloomer.

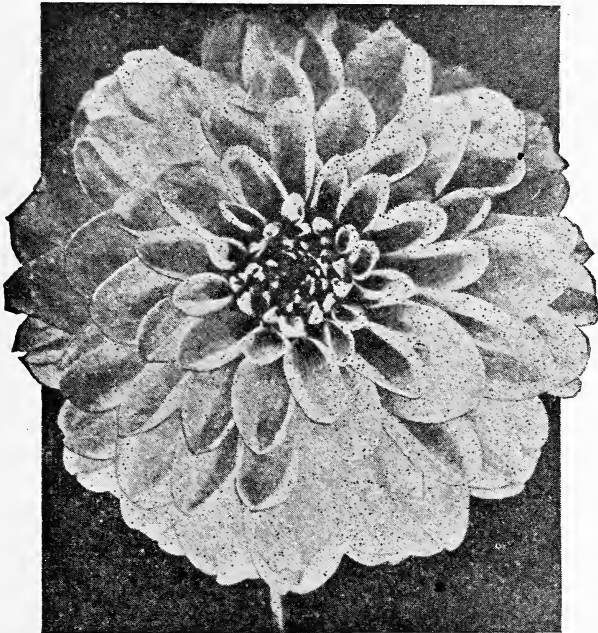
COLOSSAL CACTUS DAHLIAS (Continued)

- NIBELUNGHORT.** Immense flowers, 7 to 8 inches across, rich golden apricot, suffused old rose. Very free bloomer on long stiff stems.
- QUEEN OF HEARTS.** A beautiful pure white with yellow at base of petals, making it a most lovely and effective flower.
- SEQUIOIA.** Large golden bronze, fine form, long stiff stems. A strong grower and profuse bloomer. One of the best.
- SUCCESS.** One of the best for garden or exhibition. Clear yellow with long pointed petals. An early, free and continuous bloomer on long stems.
- T. G. BAKER.** Very large, finely formed flowers on long, stiff stems. The best clear, bright yellow cactus.
- YELLOW KING.** Probably the largest of all Cactus Dahlias, being of gigantic size and one of the finest new cactus. Color light yellow. The immense flowers are borne on long stems; the plant is a strong vigorous grower and free and early bloomer.

All Colossal Cactus Dahlias 35c Each

Values up to \$1.00 each.

Any **12** Only **\$3.85** Any **25** Only **\$7.45**



20
Choice
Decorative
Dahlias
30c
Each

(Reg. Price 35c to 75c Each)

AYESHA. A wonderfully handsome, clear light yellow Dahlia that has attracted great attention. The flowers are of immense size; beautiful, regular form, with large shell-like petals, and borne on long stiff stems. The plant is a strong vigorous grower and a most profuse bloomer, considering its large size. Excellent for garden, exhibition and commercial purposes.

DELICE. The best pure bright rose pink, entirely distinct, beautiful form.

DR. TYRRELL. Originated by F. R. Austin, treasurer of the American Dahlia Society. The flower is substantial in form and prolific. We have had disbudded flowers more than eight (8) inches across. It is an immense flower, with a good sturdy stem and fine keeping qualities. The color is a rich golden bronze, with bronzy red at base of petals, giving the flower that rich bronzy effect. The two shades are most effective. The plant is a very sturdy, healthy grower, with dark luxurious foliage, showing its hardy constitution. Strong roots.

CHOICE DECORATIVE DAHLIAS (Continued)

- F. R. AUSTIN.** One of the most striking and valuable peony Dahlias in existence. The beautifully colored flowers are of large size, averaging 6 to 8 inches across. Color, the outer petals are very long, creamy yellow, suffused, banded and shaded rich crimson; the inner petals are yellow at base tinting lighter, and suffused pink and crimson. The plant is a strong vigorous grower, an extremely early and free bloomer, and continues to bloom the entire season, making it most valuable for garden and exhibition.
- GEISHA.** The most striking color combination, golden yellow, changing to bright scarlet at the center of petal and back to gold at the tip. Giant flowers on long wiry stems.
- JACK ROSE.** The best crimson for garden or cutting; that brilliant crimson red that made the "Jack" Rose popular and suggested the name.
- JOHN WANAMAHER.** One of the loveliest formed, no two petals or flowers just alike. Color soft orchid pink. An extremely early and profuse bloomer. Should be disbudded to give large long stem flowers.
- J. LIDDEN PENNOCK.** A dwarf branching plant, producing immense rich plum colored flowers freely; the flowers are 6 inches across and 4 inches deep. An extra fine variety.
- LE GRAND MANITOU.** Immense size; lilac penciled, crimson, extra fine.
- LYNDHURST.** Brightest vermilion; the best bright red for cutting. An early, free and continuous bloomer on long straight stems.
- MINNIE McCULLOUGH.** One of the most indispensable decorative varieties that is largely, but should be universally grown. It is entirely distinct, in a class by itself, on account of the combination of Autumn shades—the gold and red of Autumn leaves. Especially effective under artificial light.
- MRS. C. H. BRECK.** One of the most effective varieties for all purposes. Color soft yellow, suffused and tipped carmine, bright and effective. The plant is a strong vigorous grower of dwarf branching habit and an early, profuse and continuous bloomer. The flowers are large and borne on stiff erect stems. It is a hybrid decorative.
- MRS. J. GARDNER CASSATT (Peacock).** A large flowered variety of elegant shape, grand stems and plenty of substance in the flower; mauve-pink of a shade that is very pleasing in a Dahlia; a fine cut flower.
- PROFESSOR MANSFIELD.** A giant decorative of most unique coloring. A pleasing combination of yellow, red and white.
- QUEEN ELIZABETH.** A new peony Dahlia that has been grown exclusively for cut flowers for several years and brought the highest prices. The field was a wonderful sight. The color a most vivid lavender cerise. The flowers are very large, 7 to 9 inches across, and produced freely on long erect stems. A strong, vigorous, healthy grower. Although now offered for the first time, through having a good stock, we are able to make the price reasonable. Should be in every collection.
- QUEEN MARY.** A grand decorative that has proven its worth as the best deep pink for all purposes. The size is large to very large, full high center, even up to November, when killed by frost. Color clear silvery cerise pink. The plant is a strong, healthy, vigorous, upright branching grower, producing the giant flowers freely on long stiff stems.
- SOUVENIR DE GUSTAV DOAZON.** One of the largest of all Dahlias. Soft orange red.
- SYLVIA.** We grow more Sylvia every year than any other two varieties, simply because it is the best general purpose Dahlia we have found. Color shell pink, changing to lavender after the flowers have opened up a few days.
- YELLOW DUKE (Decorative).** A clear canary yellow, with long straight stems. One of the best yellows.
- YELLOW COLOSSE.** A very large, bright yellow flower of perfect form with full center. One of the best for exhibition. The flowers are carried on splendid, long, stiff stems.

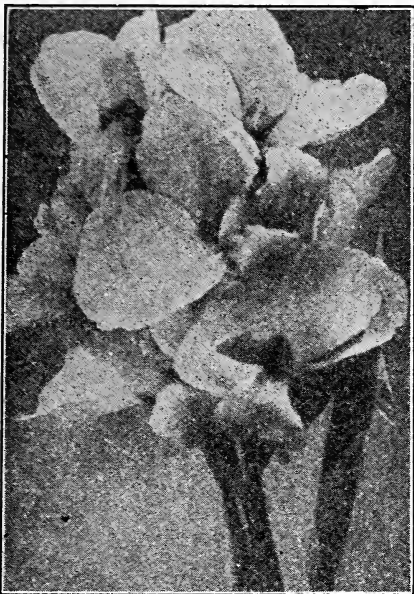
35c to 75c Decorative Dahlias 30c Each
ALL ONE PRICE

The Complete List, 20 Choice Varieties, for only \$5.15

CHOICE CANNAS

Of all the summer bedding plants Cannas are the tallest and bulkiest, and furnish the widest range of colors. Their foliage is of noble proportions, making a full, compact mass, that is wonderfully attractive in its rich shades of green, bronze, red and chocolate. The surmounting flower trusses are uniformly large and free, brilliant with most of the colors and combinations known among flowers.

Cannas will grow in any kind of soil, but for the best results should be given a sunny location. The beds should be spaded about two feet deep, and a generous amount of well rotted manure worked in and should be freely watered at all times. Plant deep and not less than 18 inches apart each way.



King Humbert. Truly a king among cannas, because of its majestic growth, which is doubly enhanced by its massive truss of coppery scarlet flowers. The foliage is deep bronze, very broad and of wonderful robust habit, growing $4\frac{1}{2}$ feet high.

25c Each; \$2.50 per Dozen

Yellow King Humbert. This is a sport of the well-known bronze-leaved variety, but this sort has green foliage; about $4\frac{1}{2}$ feet high, with masses of golden yellow flowers, dotted red; occasionally some will be streaked red.

Austria. A tall-growing variety with gigantic blooms of a lemon chrome, spotted red; 5 feet high.

Eureka. The best white variety; free bloomer; green foliage; 4 feet.

Morning Glow. Large flowering; color, shell pink; light green foliage; 4 feet.

Wintzer's Colossal. Vivid scarlet flowers of immense size; profuse bloomer; height 5 feet.

Wyoming. Orange chrome red; bronze foliage; $6\frac{1}{2}$ feet.

20c Each;

\$2.00 per Dozen

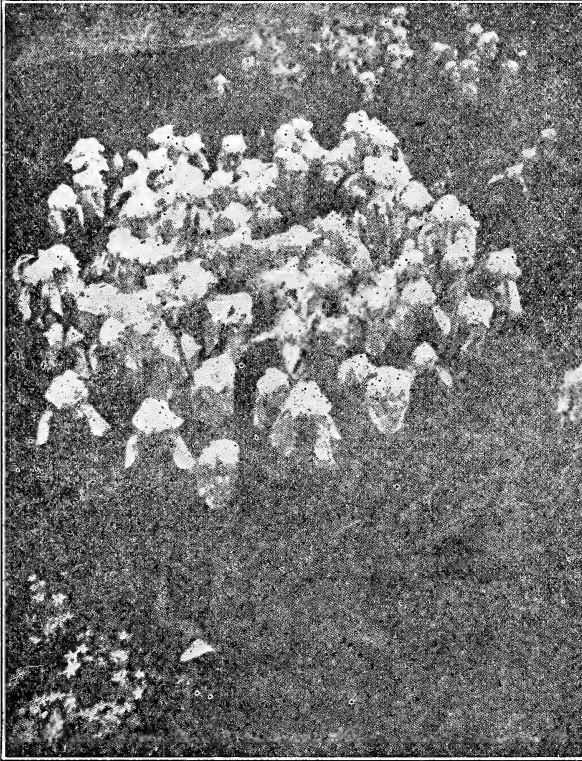
EXTRA SPECIAL
BEAUTIFUL RED CANNAS 12 FOR \$1.00
 Average Height 4 to $4\frac{1}{2}$ Feet

Growers' Sales Co.

New York City.

Please find enclosed two dollars and fifteen cents (\$2.15) for the bulb set. I appreciate greatly the quality and good measure of the canna bulbs I purchased of you this spring. You have cheap prices, but NOT CHEAP goods.—Signed N. P.

Beautiful Hardy Garden Iris



Garden Iris

SPECIAL OFFER—One dozen Jap Iris, 1 dozen Garden Iris, value \$3.00, both for only \$2.50.

Marvelous Japanese Iris

Marvels of elegance. Imagine a plant sending a dozen spikes of flowers 2 to 3 feet high, each one bearing two to four blossoms 6 to 8 inches across and of the most beautiful colors, markings and veinings, as white, violet, lavender, mauve, sky blue, etc., and you have but a faint picture of the beauty of this wonderful flower. Blooms in June and July.

**Mixed Colors: 5 for \$1.00;
\$2.00 per Dozen**

This lovely member of the Iris family is one of the most desirable and easiest grown of our spring flowering hardy plants, producing in May their showy flowers of exquisite coloring, combining the richest and most delicate tints. A dozen or so planted now will quickly become large, massive clumps that will be a pleasure for a life-time.

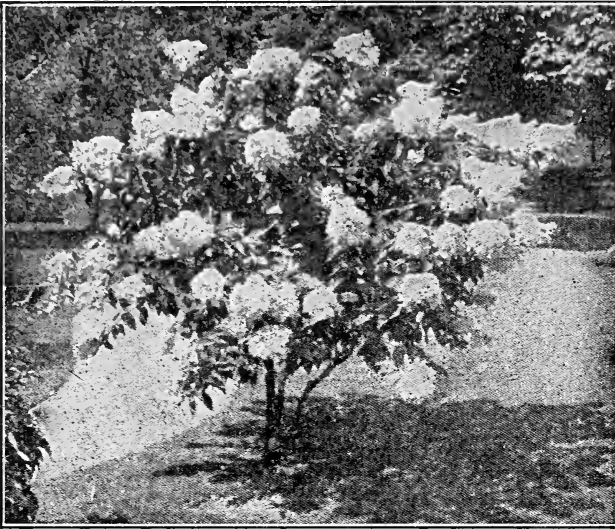
For best results, plant in a well-drained, sunny position, barely covering the roots. They require absolutely no care after once planted.

**Mixed Colors
\$1 per Doz.**



Japanese Iris

Hydrangea A. G. (Hills of Snow)



The massiveness of bloom of these valuable shrubs, and their long blooming season, assures them a place in every grouping where solid white effects are desired.

The flowers are conspicuously white and imposing from July to September. By cutting back to the crown each spring, the bushes may be kept round and dense at a height of three to five feet. They are excellent for solid low borders or in foundation plantings.

Each 75c
3 for \$2.00

HYDRANGEA PANICULATA GRANDIFLORA

Fine tall hedges, or if planted in rich soil and severely pruned every spring before the leaf buds open, will get to be very dense, dwarf clumps of compact form, wonderfully attractive when laden with their massive white plumes. Large beds, kept at a uniform development, are extremely showy; first snowy white in July, then pink, then reddish bronze and green in the Autumn.

Each 60c; per Dozen \$6.00

SNOWBERRY

Bears rose colored flowers in June and July; followed by large clustered, milk-white fruits which remain far into the winter. The combination of pink flowers and white berries on the same twig is charming.

Each 45c; 3 for \$1.25

BUSH HONEYSUCKLE

First of the shrubs to flower in the spring. Very showy and bright in the early summer and resplendent during the fall with great quantities of red and orange berries.

Each 45c; 3 for \$1.25

FORSYTHIA or "Golden Bell"

These splendid old shrubs growing 8 to 10 feet tall, eventually, light up the garden with glinting masses of yellow, very early in Spring before leaves appear.

Each 45c; 3 for \$1.25

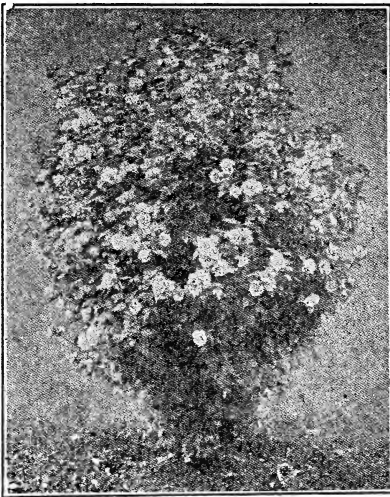
CORNUS or DOGWOOD

Valuable for the brilliancy of barks and berries, and the handsome variegations of their foliage. May be planted to advantage with other shrubs as the tangled mass of highly colored twigs enliven the somberness of shrubbery in winter, and the fall fruits call a welcome assemblage of birds.

Each 45c; 3 for \$1.25



Cornus or Dogwood



Althea

ALTHEA

Rose of Sharon

Bloom late in August and September, with a profusion of large and brightly colored flowers much like the tender Hibiscus in form. These are the color spots of fall, as Lilacs and Weigelas are of spring. The late appearing foliage is extra good and valuable for its beauty alone. Grown in standard form they attain 10 to 12 feet in height and make an attractive specimen. Planted more compactly and occasionally pruned, they are both serviceable and showy as hedges. Red, white, pink or purple.

Each 50c, 3 for \$1.25

BUDDLEIA OR BUTTERFLY BUSH

Of quick bushy growth; when the lovely bloom-spikes appear in July, the shrub, which had probably died down nearly to the ground in the winter, is now a perfect, well branched specimen of about 5 feet; radiating a delightful perfume and glowing with the tints and flower shape of the spring Lilacs.

Each 75c; 3 for \$2.00

DEUTZIA PRIDE OF ROCHESTER

Most popular of the Deutzias. Blooms in May. Flowers large and free, double, white.

Each 45c; 3 for \$1.25

Calycanthus

A unique shrub growing upright to 6 feet, clothing its straight, strong, reddish brown shoots with long glossy leaves, from the axils of which spring odd, double, spicily fragrant flowers of chocolate red, from which it derives its common name of Sweet Shrub or Allspice.

Each 50c; 3 for \$1.35

Snowball

The old favorite which helps out so bravely for Decoration Day, with its lovely white balls of bloom.

Each 60c; 3 for \$1.50

Weigela Rosea

An elegant shrub with fine rose colored flowers; of erect compact growth; blooms in June.

Each 60c; 3 for \$1.50

Purple Lilac

SYRINGA

Best beloved of all the old time shrubs, exquisitely fragrant, blooms during the spring months; with ornamental foliage the entire season.

Each 60c; 3 for \$1.50

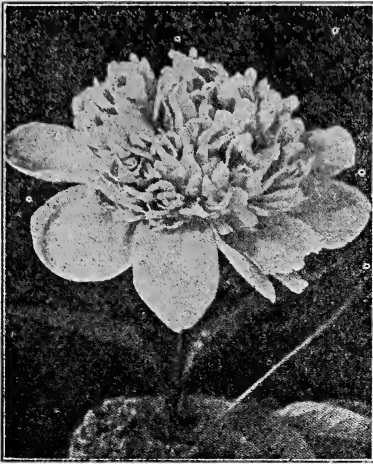
Spirea Anthony Waterer

Dwarf, bushy, of spreading type, with large corymbs brilliantly colored rosy crimson. Very free, flowering at its best in late summer. This is practically the only good showy red flowered shrub sufficiently dwarf to be used in foundation plantings, or the low front row of shrub group.

Each 60c; 3 for \$1.50

12 GORGEOUS PEONIES ONLY \$8.75

(Regular Value \$12.00)



"The Queen of Spring Flowers" is truly an appropriate name for the Peony whose brilliant hues add attraction to all around. Rivaling the Rose in coloring and fragrance they produce a gorgeous effect not equalled by any other flower. They are perfectly hardy, needing absolutely no protection, and planted in a good, rich, deep soil, and given plenty of water during their growing season they give a wealth of flowers, increasing in beauty year after year.

Peonies should not be planted too deep as this is one of the most common reasons for their failing to bloom. Barely cover the crown with not more than 2 inches of earth.

8 WEEKS OF PEONY BLOOM

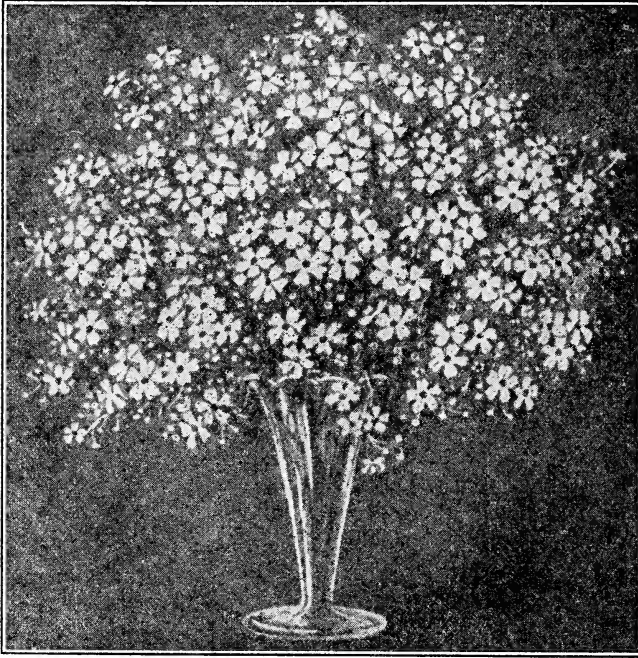
This set has been carefully chosen to give you 12 of the finest peonies in existence, a wide color range; pink, red, white, violet rose and yellow; and 8 weeks of Peony bloom; early, midseason and late blooming varieties.

- CURONNE D'OR**—Early. Large flat, semi-rose type, ivory white, fragrant, very free bloomer and most dependable. \$1.00
- COMTE DE JUSSIER**—Early. Bomb shape, guard petals blush, inner sulphur yellow, a profuse bloomer; fine for cutting. \$1.00
- DUTCHESS DE ORLEANS**—Midseason. Large bomb, clear violet rose, center shaded lilac and salmon, profuse bloomer, a delightful bud. \$1.00
- DORCHESTER**—Late. Delicate pale hydrangea pink, large fragrant bloom on strong rather dwarf upright stems. \$1.00
- DOCTOR BRETONNEAU**—Midseason. Medium bomb, pale lilac rose, fragrant, splendid keeper, free bloomer, also known as "Lady Leonora Branwell." \$1.00
- DIRECTEUR AUBRY**—Late. Large, flat, rose type, rose carmine, without stamens, strong grower, free bloomer. \$1.00
- EDULIS SUPERBA**—Early. Large, bright mauve pink, color mixed with lilac, very fragrant, strong, free bloomer. \$1.00
- FESTIVA MAXIMA**—Early. The very largest, milkwhite, flecked crimson, a magnificent bloom. \$1.00
- FELIX CROUSSE**—Midseason. Large globular bomb, brilliant rose red, fragrant strong grower and a free bloomer. Finest of all midseason reds. \$1.00
- FESTIVA**—Early. A very prolific bloomer, creamy white, crimson spots blooms not as large as Festiva Maxima. \$1.00
- FRANCOIS ORTEGATE**—Midseason. Large semi-rose type, dark amaranth red, yellow stamens, medium height. \$1.00.
- SULFUREA**—Early. Crown type. Large flowers. White guard petals, center sulphur yellow. A free bloomer. \$1.00.

UNNAMED PEONIES

Any Color, Red, White, Pink. Special 50c Each, 5 for \$2.00
Per Dozen \$4.50

Yellow Peonies 75c Each. 3 For \$2.00



GYPSOPHILA (Baby's Breath)

The illustration above will give you an idea of the beauty of Baby's Breath as a bouquet of fresh cut flowers, with its myriad cluster of dainty white flowers; and they have the added advantage of being semi-everlasting, keeping for months without water.

Each 35c,

4 for \$1.00

ORIENTAL POPPY

Most gorgeous of all the poppies, for a display of brilliant coloring nothing equals them during their time of flowering, May and June. Of easy culture, but should be planted in the Fall or early Spring before May 1st.

Each 35c, 4 for \$1.00

ACHILLEA

(The Great Cemetery Plant)

Invaluable for cemetery planting as it commences to bloom early in July and is a perfect mass of beautiful flowers until frost, the same blooms keeping perfect for two or three months, and produced in large sprays, making it one of the finest cut flowers for mixing in with bouquets, vases, baskets, etc. Will produce hundreds of flowers the first year.

Large Plants, 35c Each, 4 for \$1.00



New Giant Hibiscus

(MARSHMALLOW)

A wonderfully improved form of our greatly admired Marshmallow. Attaining a height of 6 to 7 feet, with beautiful lacinated foliage and monstrous flowers measuring from 6 to 8 inches across; they are real show plants during their flowering season. Red, Pink or White.

35c Each, 4 for \$1.00

HARDY PHLOX

There is no hardy flowering plant that will produce such a dazzling display of brilliant colors of all shades from early in July until frost as Perennial Phlox. It has been greatly improved of late years, so that the flowers are much larger, more abundant and more brilliant, while the stalks are shorter. The number of varieties is legion, but we offer only a few of the best in assorted colors.

40c Each, 3 for \$1.00

BLUE SAGE

Blooms in profusion during August and September, throwing up tall spikes of sky-blue flowers 3 to 4 feet high. One of the few blue flowers that is a distinct addition to any perennial garden.

Each 35c, 4 for \$1.00

Popular Hardy Perennials at Bargain Prices



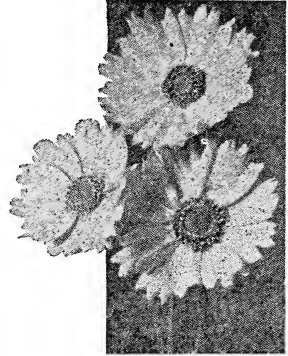
Garden Pinks

HARDY GARDEN PINKS

Brilliantly colored flowers, which appear in great numbers on the plant, and have a rich clove scent. For table bowls, as a cut flower, they are much in use. For edging hardy borders, garden walks or planted in rock gardens, they fill an important place. They are at their height of bloom in June.

Hollyhocks

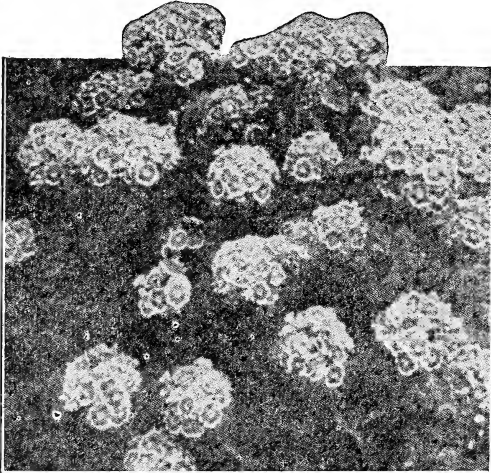
Another valuable old standby, growing to a height of four to six feet. They are especially desirable as a background for smaller plants. to hide fences, and unsightly views, and make a wonderful show. Many beautiful colors.



Coreopsis

COREOPSIS

Flowers rich golden yellow and of graceful form; fine for cutting. Planted individually or in clumps a few plants make a wonderful display. From June to October dozens of flowers are produced on a single plant. Coreopsis surely provides both quantity and quality.



Dianthus Barbatius—Sweet William

AQUILEGIA

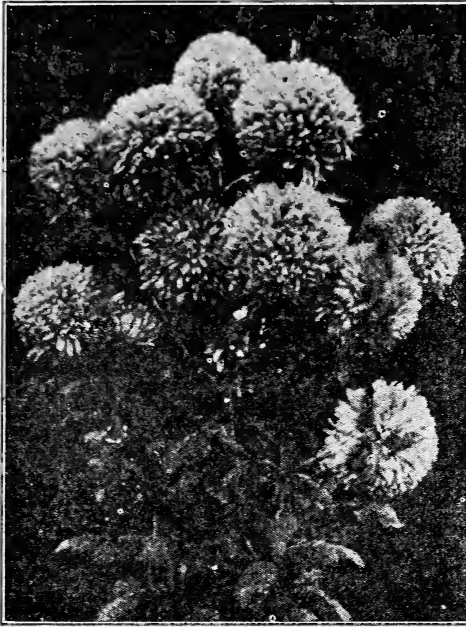
(Columbine)—Blooming during May and June their graceful spurred flowers rise on long stems 2 feet above their attractive foliage. Very effective for rockery gardens, semi-shaded places, in hardy borders, or planted in clumps.

SWEET WILLIAM

One of the foremost and valuable of the perennials, as it produces quantities of bloom which make a grand effect early in the spring while it is too soon for the others to flower.

Any of the above 20c each
\$1.95 per Dozen

Hardy Garden Chrysanthemums



Hardy Garden Chrysanthemums

These showy and effective favorites are universally popular. When planted outside they extend the flowering season of your perennial garden, blooming profusely in October after other flowers have been browned by early frosts, which do not affect Chrysanthemums, producing a wealth of bloom especially fine for cutting.

Hardy Chrysanthemums are among the most satisfactory of plants, being extremely easy to grow, they thrive in most any location.

They should be set out in a sunny, well drained location, the shoots pinched back a couple of times during May and June. They will then branch out and become beautiful blooming plants.

Assorted types and colors
25c Each, \$2.50 per Dozen.

Heavier Field Grown Plants
50c Each, per Doz. \$5.

Delphiniums or Hardy Larkspur

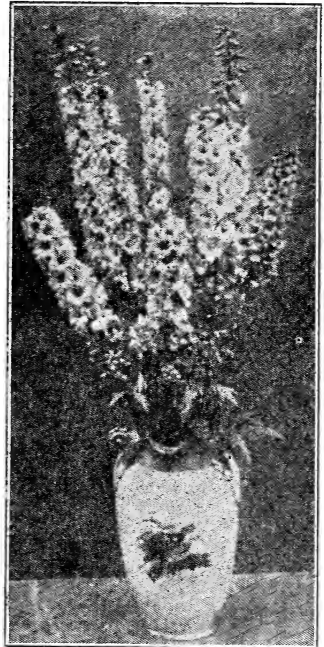
An old fashioned flower whose wonderful display of dazzling deep blue makes it very worthwhile. They can be kept in bloom continuously during the Summer by cutting the old flower stems off after they have faded, and new shoots will produce flower heads in succession. An occasional feeding of bone meal during the Summer will keep them at their best. Strong plants, 35c Each, 4 for \$1.00.

SHASTA DAISY

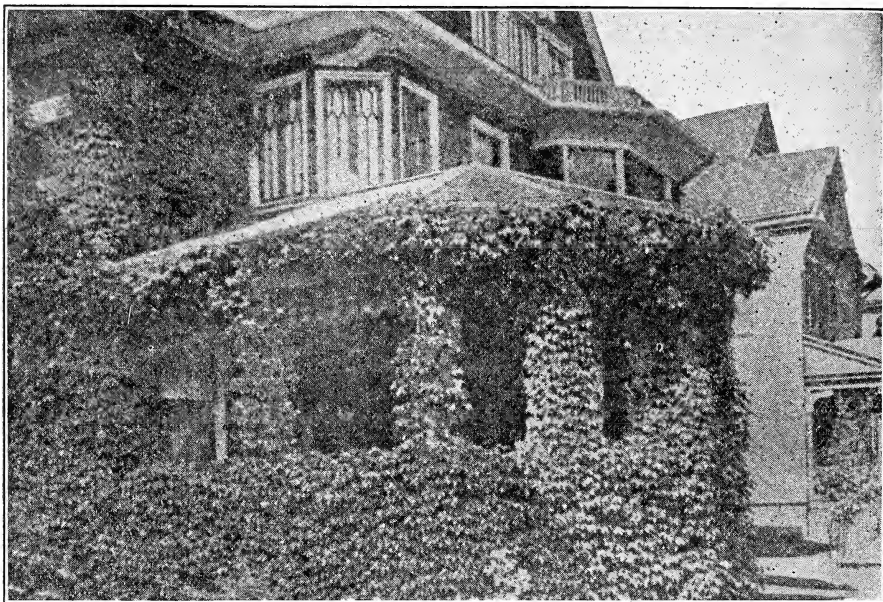
A decided improvement on the original, with blooms $4\frac{1}{2}$ to 5 inches across, of pure glistening white. Very free flowering, in bloom all summer. 35c Each, 4 for \$1.00.

ALYSSUM

An excellent low spreading plant for rockery or border, growing about 10 inches high and producing in May masses of golden yellow flowers. 35c Each, 4 for \$1.00.



Delphinium



AMERICAN IVY

This is one of the finest hardy climbers we have for covering walls, as it clings firmly to the smoothest surface, covering closely with over-lapping foliage giving the appearance of shingles. The color is a fresh deep green in summer, changing to the brightest shades of crimson and yellow in autumn.

2-Year 60c Each, 2 for \$1.00

DUTCHMAN'S PIPE (Aristolochia Tomentosa)

An odd and desirable climbing vine. The brown flowers are shaped like the bowl of a pipe which gave it the name of Dutchman's Pipe; its very oddity makes it noticeable and attractive, and its handsome light green leaves form a quick, dense shade.

Each 60c, 2 for \$1.00

BIGNONIA RADICANA (Trumpet Vine)

One of the handsomest hardy climbers, strong growing, bearing large clusters of orange red flowers which always attract the humming birds. Mostly grown on trees or walls. Useful for covering unsightly places, stumps, or wherever a flowering vine is desired, though it can be cut back and made almost self-supporting.

Price 50c Each, 3 for \$1.25

BEAUTY AT SMALL COST

What will add so greatly to the appearance of your home and grounds, and at so little cost, as beautiful Climbing Vines. The beauty of almost every home can be greatly enhanced by a judicious planting of these climbers.

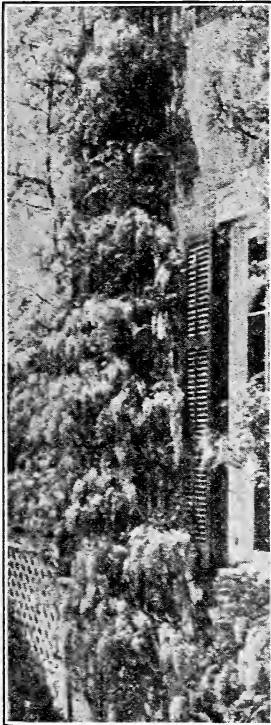
American Ivy for brick walls; Clematis or Wisteria to cover pergolas, arbors, porches, etc.; the sweet smelling, old fashioned Honey Suckle as a covering for unsightly outbuildings, fences, and hillsides; and last but not least, Trumpet and Kudzu Vines which are so fast growing they soon turn a homely spot into a bower of beauty.

Just stop a minute to think. Don't you remember a place you had intended planting a vine? Make up your mind to do it this spring and order it now while it is fresh in your mind. You will thank us later for reminding you of it.

KUDZU VINE

This vine grows a foot a day and makes a dense covering; exceedingly attractive. Towards the end of the summer it produces small, rosy-purple flowers.

Each 45c, 3 for \$1.10



Wisteria



Clematis

CLEMATIS

Sweet-scented Japan Clematis. The flowers are of medium size, fragrant, pure white, borne in immense sheets in September when very few other vines are in bloom.

2 Year 40c Each, 3 for \$1.10

HONEYSUCKLE

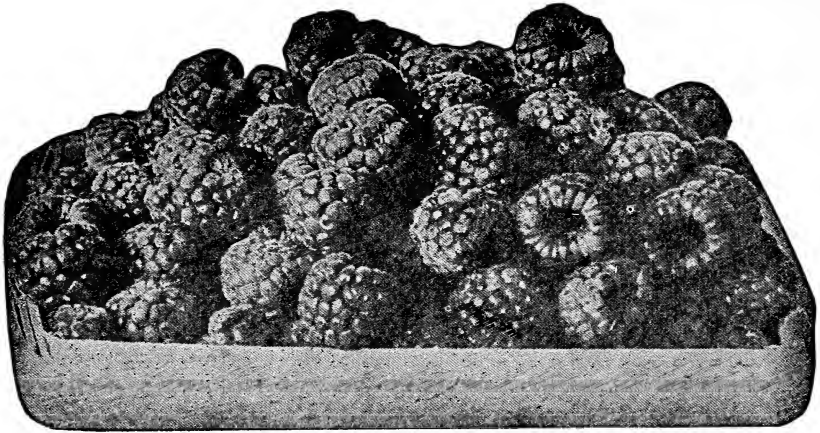
This old favorite requires very little comment or description, always yielding a wealth of fragrant bloom. No more desirable climbing vine can be found, especially as a cloak for unsightly fences, subbuildings, etc., and has the added advantage of being inexpensive and of very easy culture, growing where most other plants perish.

Each 35c, \$3.50 per Doz.

WISTERIA

One of the handsomest subjects for use on pergolas, porches and trellises; with attractive foliage and magnificent dense, drooping clusters of pea-shaped blue flowers, crowning the top.

2 Year 75c Each, 3 for \$2.00



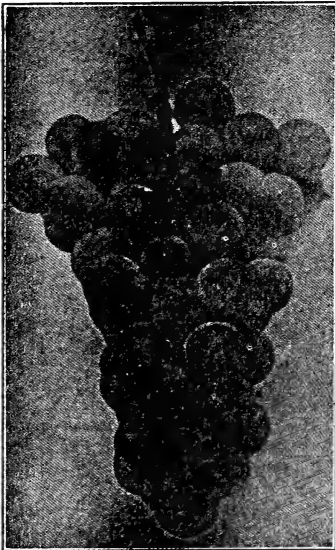
St. Regis Everbearing Red Raspberries

AS DELICIOUS AS THEY LOOK

Woudn't you enjoy a large dish of these delicious berries, smothered in cream, right from your own garden. You can have them all through the Summer, if you plant St. Regis, the best of the Everbearing Red Raspberries. A dozen plants, or so will provide enough berries for a good sized family.

Dozen \$1.00, \$7.50 per 100 \$50 per 1000

FOUR BEST GRAPES



CATAWBA—Red. Well known. Bunch and berry large and of a rich, vinous, refreshing flavor and best quality. Ripens several weeks after Concord.

CONCORD—Black. The most extensively planted and generally successful grape in America. Bunch and berry large, good quality, medium early; vine a rank grower, very healthy, hardy and productive.

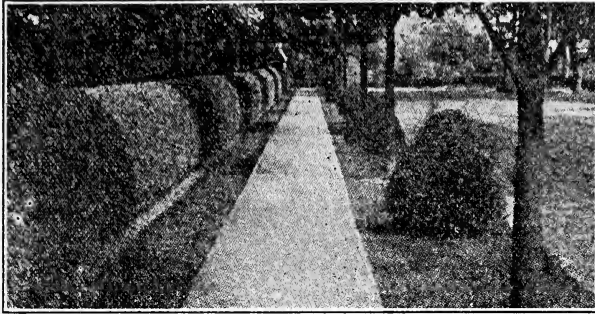
NIAGARA—White. A magnificent grape and very valuable for both garden and vineyard. Berries are large with tough skin, quality very good; beautiful bunches of the largest size. Ripens about with the Concord. A rank grower and very productive. Generally popular both North and South.

WORDEN—Resembles Concord, but is sweeter, larger in bunch and berry, and a week to ten days earlier.

Big 2 Year Vines, 40c Each; 4 for \$1.50

CALIFORNIA PRIVET

THE ONE BEST HEDGE PLANT, COMBINING BEAUTY, HARDINESS AND EFFICIENCY



California Privet has long stood as the one best plant for Hedges, as it is remarkable for its beautiful dark green, glossy foliage, its quick, strong and symmetrical growth, its freedom from insect scale, and its ability to withstand pruning and trimming into any desired shape at any season of the year.

It holds its foliage up to the holidays in this vicinity and is evergreen south of Philadelphia. Plants are cheap, free from thorns, and do not sprout or sucker from the roots.

Plants in double rows, 12 inches apart, set so that the plants in one row come between those in the other row, to insure a fine bushy hedge.

Plants, 12 to 18 inches \$6.00 per 100
\$35.00 per 1000

Better Than She Expected

Mount Holly, N. J., October 14, 1925.

Growers' Sales Co.

I received the six plants this A. M. They were in very good condition; in fact, they were much better in all ways than what I expected.

They were and are worth while waiting for. I am very much pleased with them. Thank you.—
Mrs. G. B.

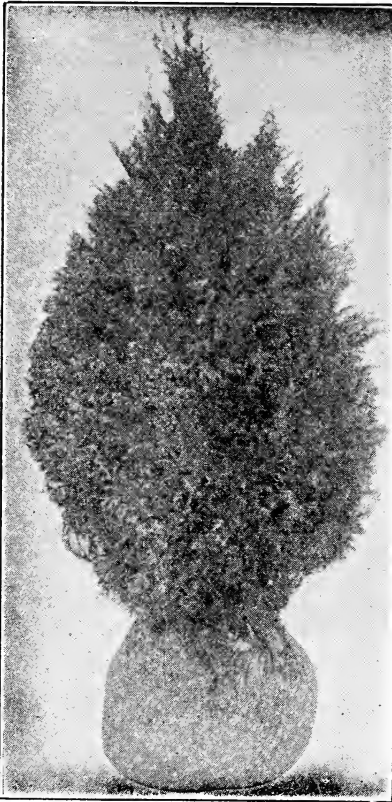
Dwarf Barberry Hedge Plants

Barberry is one of the finest Hedge plants in existence, and excepting California Privet, is the most generally planted. It is dwarf growing; attaining a height of about 2½ feet; uniformly bushy and rounded in form, making a compact, impassible hardy, low hedge for confining lawns or dividing properties.

It is also extensively planted among shrubbery where beautiful foliage effects are desired as it is susceptible to formal pruning, and its dwarf growing, bushy and rounded form, with small numerous leaves densely covering the thorny twig, makes it an admirable filler or edging for shrubbery groups; as a foundation screen in front of porches, and for specimen plants where a low growing shrub is desired. Although variable in accordance with seasonable conditions, autumn paints the foliage scarlet or gold, and studs the branches with crimson fruits.

Plants, 12 to 15 inches, 35c each
\$3.00 for 10, \$25.00 per 100

A FEW CHOICE EVERGREENS



Cypress

swaying clumps of soft needles. Attains a great height and spread with age, a picturesque value for a distant sky line. $1\frac{1}{2}$ to 2 ft., \$3.50; 2 to 3 ft., \$5.00.

CYPRESS (*Retinospora Plumosa*)

PLUME-LIKE CYPRESS

An exceedingly handsome, acorn shaped evergreen of medium tall growth, with feathery, light green foliage. $1\frac{1}{2}$ to 2 ft., \$7.00 Each.

PLUMOSA AUREA

A plant of great beauty; foliage soft plume-like, of a golden yellow color; close and compact habit. Each, $1\frac{1}{2}$ to 2 ft., \$7.00.

THE TWO CYPRESS, FOR ONLY \$12.00

SPRUCE

NORWAY SPRUCE—Best known and most generally planted of all the Evergreens. Tall, rapid growers, are hardy in most any location.

12 to 18 in., \$1.75 $1\frac{1}{2}$ to 2 ft., \$2.50 2 to 3 ft., \$3.00 3 to 4 ft., \$5.00

COLORADO BLUE SPRUCE—A selected blue shade. One of the most beautiful, showy, and impressive evergreens grown.

$1\frac{1}{2}$ to 2 ft., \$9.00 2 to 3 ft., \$12.00 3 to 4 ft., \$18.00

Evergreens are the answer to the question of what to do to fill in that bare place around your home, and add beauty that endures the whole year round. A few dollars invested in our Choice Evergreens will add hundreds to the appearance and value of your home.

You will find listed below Evergreens at very low "Get-Acquainted" prices to introduce our Quality Evergreens to you, and lay a foundation of satisfaction that will bring you back to us year after year as you increase your planting of Evergreens.

IRISH JUNIPER

Erect, slender and formal in habit; foliage sage green, very compact; making a splendid column eventually 15 to 20 ft. high; much used in cemeteries.

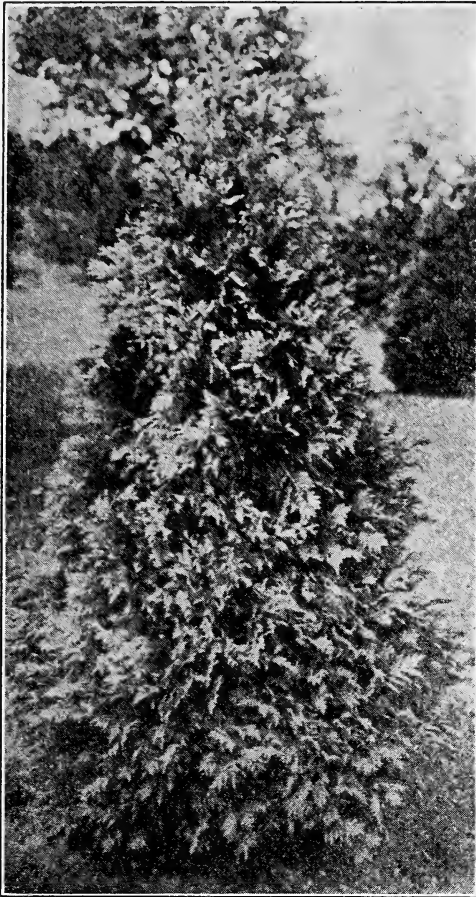
$1\frac{1}{2}$ to 2 ft., \$2.75; 2 to 3 ft., \$5.00

PINE

AUSTRIAN PINE—Tall, massive, with spreading limbs and long, stiff needles. Thrives along the coast, inland, and under city conditions. Handsome for specimen or open group planting.

$1\frac{1}{2}$ to 2 ft., \$7.00; 2 to 3 ft., \$9.00

SCOTCH PINE—A strong featured, silvery-green foliage, in long



American Arbor Vitae

A well known variety of great value; it forms an upright, conical tree of medium size, stands trimming well and is considered a fine evergreen for screens, being sturdy and more easily transplanted; very dense and impervious to the sight. This evergreen will adapt itself to all locations, but does especially well in moist soil.

12 to 18 in. \$2.25

1½ to 2 ft. \$3.00

2 to 3 ft., \$4.00

3 to 4 ft., \$5.50

Pyramidal Arbor Vitae

An extremely compact grower, narrow pyramidal-shaped evergreen with spray-like foliage. Deep rich green color. The growth is regular, close and compact. Requires little space, which makes it desirable for planting near the house in foundation plantings. Plant as a single specimen or in groups or two or three at either side of the entrance or at the corners of a lawn or building. It breaks the sharp outline and the ornamental effect is most pleasing. Reaches a height of 10 or 15 feet. By annual pruning can be kept at any desired height.

12 to 18 in. \$2.75 Each

BALSAM FIR

A broad, regular pyramidal-shaped tree. Foliage is sweet scented and dark green above, silvery beneath. Retains its color throughout the severest winters. Rapid grower and very desirable for specimen on lawn, or for foundation planting.

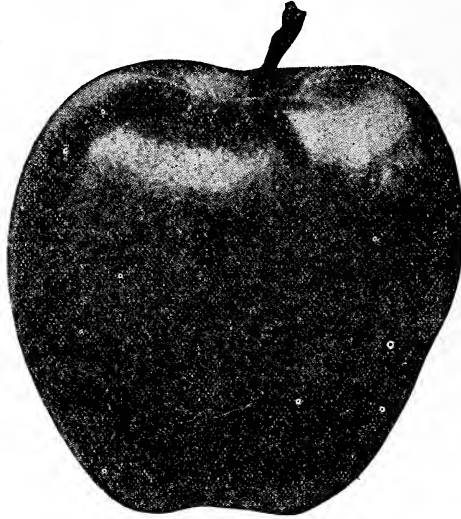
18 to 24 inch, \$4.50 Each

DOUGLAS FIR

Another well known sort. Upright, symmetrical branched tree, branches spreading 12 to 18 feet in old trees. Will grow 60 feet and more in height.

18 to 25 inch, \$3.50 Each

FRUIT DEPARTMENT



APPLES

The Apple is the first in importance of all fruits. It will thrive on nearly any well drained soil. Its period of ripening, unlike other fruits, extends very nearly through the whole year. By making careful selection, a constant succession can be obtained. For family use there is no fruit that is more indispensable. Plant Apple trees thirty to forty feet apart each way.

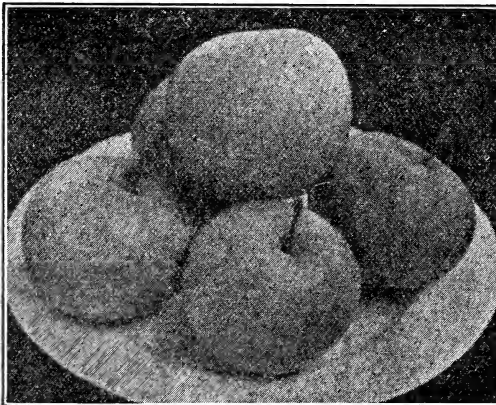
SUMMER APPLES

- EARLY HARVEST**—Medium pale yellow, tender, juicy.
RED ASTRACHAN—Large beautiful deep crimson.
YELLOW TRANSPARENT—Best of the early kinds, white, tender, juicy.

AUTUMN APPLES

- FALL PIPPIN**—Large, yellow, rich.
MAIDEN BLUSH—Large beautiful blush cheek.
WESTERN BEAUTY—Large, shaded bright red on pale yellow; crisp, tender, mild sub-acid.

PRICES ON NEXT PAGE



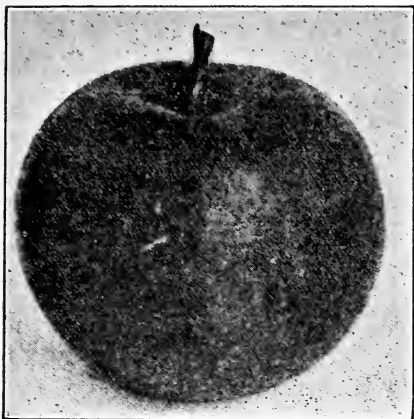
Yellow Transparents

CRAB APPLES

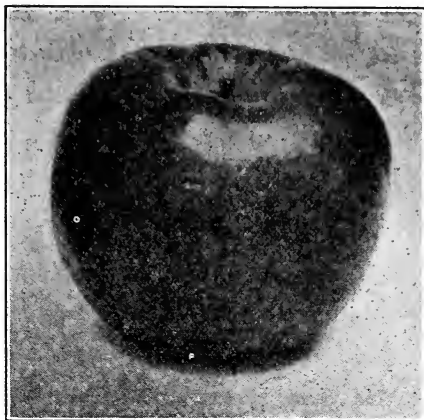
For preserving, jellies and ornament. Many of the newer sorts are delightful table fruits; all are unequalled for cider or vinegar. The trees are noted for their hardiness and vigor and usually bear the second season after planting.

- HYSLOP**—Large, deep-crimson, one of the most beautiful of Crabs; very popular. Oct. to Jan.
MARTHA—Beautiful, glossy yellow, shaded bright red, good size, mild. Clear tart. October.
WHITNEY—One of the largest, glossy green, splashed carmine, firm, juicy, pleasant, great bearer; excellent for cider. August.

Each \$1.00, 10 for \$8.50



Rome Beauty



Northern Spy

WINTER APPLES

BALDWIN—Large, bright, red, crisp, juicy, rich.

BEN DAVIS—Large, handsome, striped.

DELICIOUS—Fruit large, nearly covered with brilliant dark red. Flesh firm, crisp, juicy; of very highest quality.

GOLDEN RUSSET—Medium, dull, russet, crisp, juicy.

GRIMES—Good size yellow, productive, of highest quality.

JONATHAN—Medium red, extra quality.

McINTOSH—Medium, deep crimson.

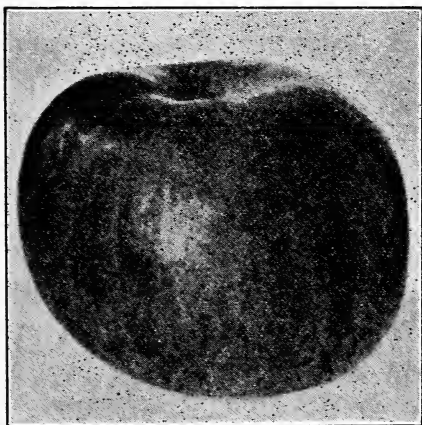
RHODE ISLAND GREENING—Best of the greenings; greenish yellow, tender, juicy, rich, acid.

ROME BEAUTY—Large yellow, shaded red. A real leader.

STAYMAN—Improved Winesap, larger and more prolific.

NORTHERN SPY—Larger, striped, tender, rich delicious flavor.

WEALTHY—Few varieties are at once so hardy and productive. Fruit of the highest quality, white fleshed, juicy and vinous of medium size, round, deep red.



McIntosh

APPLES FURNISHED IN THREE STANDARD SIZES

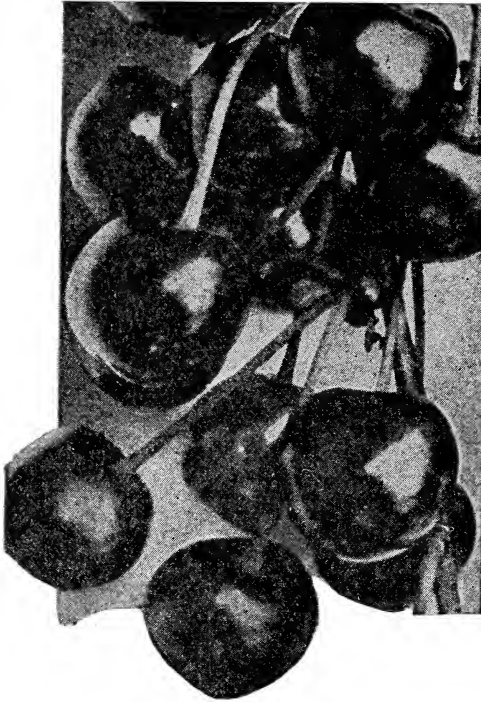
x size, 3 to 4 ft., 60c each,
10 for \$4.50

xx size, 4 to 5 ft., 75c each,
10 for \$6.00

xxx size, 5 to 7 ft., 90c each,
10 for \$7.50

None shipped C. O. D.

All Trees Shipped by Express



Black Tartarian

CHERRIES

A good Cherry Orchard is one of the most profitable ventures a farmer can undertake. With but little care, the trees are very thrifty and prolific, bearing large crops annually. The fruit is easily picked and it is always in great demand.

The trees are naturally hardy, succeeding best on sandy or gravelly loam, well drained. Avoid low or wet ground. Sweet varieties grow more rapidly and make larger pyramidal trees. Set trees 18 to 20 feet apart. The Sour varieties are dwarf and bushy, bear earlier, and are more largely planted. Set trees 15 to 18 feet apart.

SOUR CHERRIES

EARLY RICHMOND — Medium dark red, melting, juicy, rich acid, best. June.

LARGE MONTMORENCY—Large, red, productive, 10 days later than early Richmond. Late June.

WRAGG—Very hardy, vigorous and productive, medium dark purple, fine quality. August.

x size, 75c, 10 for \$6.00

xx size, \$1.00, 10 for \$9.00

xxx size, \$1.50, 10 for \$12.00

SWEET CHERRIES

BLACK TARTARIAN—Very large, black, juicy, rich. Late June.

NAPOLEON—One of the largest and best of all sweet cherries. Pale yellow with bright red cheek. July.

x size, 85c 10 for \$7.00

xx size, \$1.25, 10 for \$11.00

xxx size, \$1.60, 10 for \$14.00

WINDSOR—Fruit large, liver colored, hardy and prolific. A valuable late variety. July.

APRICOTS

HARRIS SUPERB APRICOT

Hardest, surest bearing of any of the Apricots. The best and most productive. Medium size, light salmon color. Each \$1.00, 10 for \$9.00.

QUINCE

ORANGE QUINCE

Large, bright yellow fruit, excellent flavor. October.

\$1.50 Each

PLUMS

ABUNDANCE—Large, pinkish red.

BURBANK—Hardy, vigorous, bears young, cherry red.

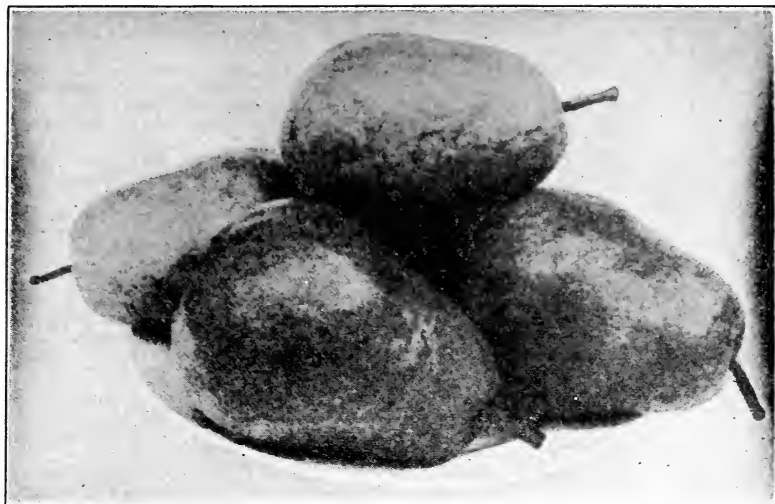
x size, 60c

OCTOBER PURPLE—Late, purple.

RED JUNE — Vigorous, upright, grower. Vermillion red.

xx size, \$1.00

xxx size, \$1.50



Bartlett Pears

BARTLETT PEARS

This is the most generally satisfactory of all the pears. A good strong grower, flesh white, fine grained, luscious, large and buttery. August and September.



Clapp's Favorite

CLAPP'S FAVORITE — Very large, yellow and dull red, with russet specks, melting, rich. Aug.

FLEMISH BEAUTY — One of the hardiest and best. Sept. and Oct.

KIEFFER—Large, good keeper and delicious fruit. Oct. and Nov.

SECKEL — Small, yellowish brown, one of the richest and most highly flavored pears. Sept. and Oct.

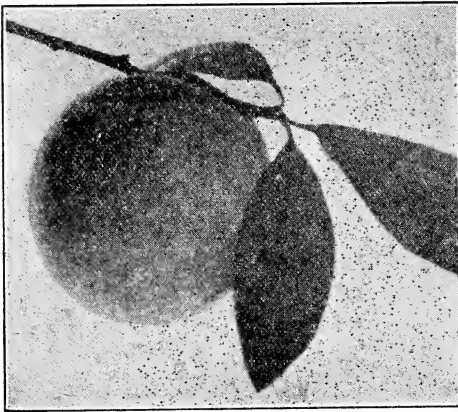
SHELDON—Medium size; yellow, brisk, vinous flavor, of first-quality. Oct.

x size, 60c each, 10 for \$4.50

xx size, 90c each, 10 for \$7.50

xxx size, \$1.50 each, 10 for \$12.00

Dwarf Pears, \$1.00



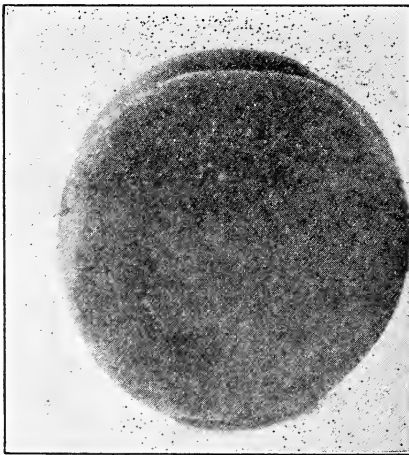
Champion

ELBERTA—The leading variety most generally planted of all the peaches. Large, yellow. Follows Early Crawford.

MOUNTAIN ROSE — Large, red flesh white, juicy, one of the best August.

EARLY CRAWFORD—A magnificent large yellow peach of good quality. Early in September.

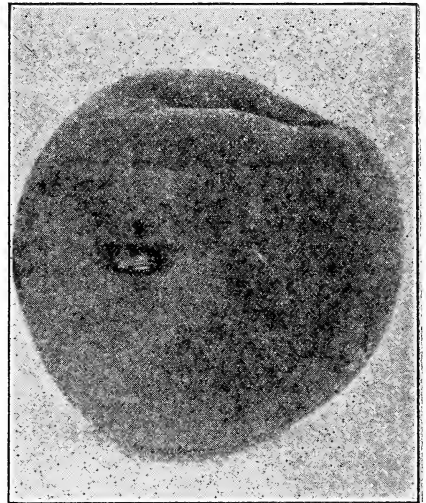
LATE CRAWFORD—A superb large yellow peach. Late Sept.



Elberta

PEACHES

Peaches succeed best on warm soil. Keep ground well cultivated and fertilize mostly with wood ashes, lime, etc. Barnyard manure and other nitrogenous fertilizers produce too rank and soft growth, thus making them tender. Trim the new growth back annually one-third to one-half and part entirely if too dense, before sap starts in Spring. Keep out the borer by wrapping the trunk with tarred paper extending some four inches above and below the surface of ground. Disease and early death are caused, mainly by the borer and starvation. Plant fifteen feet apart each way. The white fleshed varieties are marked by affixing the letter "W" to name.



Crawford's Early

BELLE OF GEORGIA—Very large, skin white with red cheek, flesh white, of excellent flavor. Early September.

CHAMPION — Extremely large, early, creamy white with red cheek, sweet, rich, and juicy. August.

x size, 35c, 10 for \$3.00
 xx size 50c, 10 for \$4.00
 xxx size 60c, 10 for \$5.00



THE MAPLES

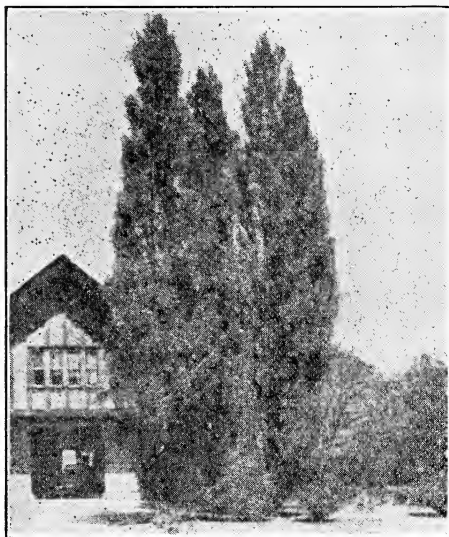
- ASH-LEAF**—A fine rapid growing variety; very hardy. Succeeds where other varieties do not thrive, 6 to 8 ft., \$1.25
- NORWAY**—Native of Europe; a large handsome tree, with broad, dark green, shining foliage. Very desirable for street, park, or lawn, 8 to 10 ft., \$5.00
- RED OR SCARLET**—A large tree with spreading branches, the earliest Maple to bloom, its beautiful red flowers appearing in late winter. Leaves vivid red and scarlet in the fall, 6 to 8 ft., \$2.75
- SILVER**—A hardy, rapid growing, beautiful native tree of large size. Valuable for producing a quick shade, 8 to 10 ft., \$1.75
- SCHWEDLER II**—The purple Norway Maple with their gleaming red and purple leaves make a beautiful contrast with the light green of other trees. Purplish green in mid-summer; in autumn golden yellow, 6 to 8 ft., \$5.00
- SUGAR**—This well-known variety is one of our best shade trees. Unexcelled for the lawn, 8 to 10 ft., \$4.00
- WEIR'S CUT-LEAF**—A silver Maple with remarkable and beautiful dissected foliage. Of rapid growth shoots slender and drooping; giving it a very graceful appearance, 6 to 8 ft., \$1.75

MOUNTAIN ASH

- AMERICAN**—A massive native tree of rapid growth, developing into broad, spreading specimen, 6 to 8 ft., \$2.00
- EUROPEAN**—Larger, darker leaves than the American variety, remaining on the tree late in the fall, 6 to 8 ft., \$2.00
- OAK-LEAF**—Dark lobe, oak-shaped leaves. A showy and striking specimen, 6 to 8 ft., \$2.00

THE OAKS

- AMERICAN**—A desirable shade tree for lawns, parks, public grounds and avenues, 6 to 8 ft., \$2.75
- PIN**—An extremely popular variety because of its rapid growth, and the beauty of its glossy leaves. Grows 60 to 80 ft. The branches have a downward sweeping tendency, 6 to 8 ft., \$3.25
- SCARLET**—One of the best of our shade trees for dry locations. Takes its color from the brilliancy of its Autumn foliage, 6 to 8 ft., \$3.25
- WHITE**—Excellent for parks and large lawns, 6 to 8 ft., \$2.75



Lombardy Poplar

THE POPLARS

BOLLEANA—Rapid growth, and will thrive in most any soil even under adverse conditions often found in cities. Leaves are silvery-white underneath. 8 to 10 feet, \$1.25

CAROLINA—10 to 12 ft., \$1.25.
12 to 14 ft., \$1.75

LOMBARDY—A tall columnar form that is in contrast to the more rounded outline of other trees. Splendid for screen planting. 10 to 12 feet, \$1.50

SILVER—6 to 8 ft., \$1.25. 8 to 10 ft., \$1.50

THE WILLOWS

BABYLONICA—The well-known Weeping Willow. Especially effective when planted near water. 6 to 8 ft., \$1.25

LAUREL LEAF—A splendid ornamental small tree, with large, glossy laurel-like leaves, whence its name. This variety is very useful to inject dark, shiny foliage into groups of lighter color, with low growth and compact shape. 8 to 10 ft., \$1.50

THE ELMs

AMERICAN—One of the grandest park and street trees. 6 to 8 ft., \$1.25

CAMPERDOWN—Of weeping habit, overlapping so that a compact, roof-like head is formed. 1 yr. heads, \$3.75

ENGLISH—Not so tall as the American, but more densely branched. 6 to 8 ft., \$1.50

PURPLE-LEAVED—Erect, slender branched, dark purplish green foliage. 6 to 8 ft., \$2.00

SCOTCH—A rapid growing spreading tree. One of the best avenue trees. 8 to 10 ft., \$2.00

HICKORY SHELLBARK—3 to 4 ft., \$2.75

AMERICAN FILBERT—3 to 4 ft., \$1.50

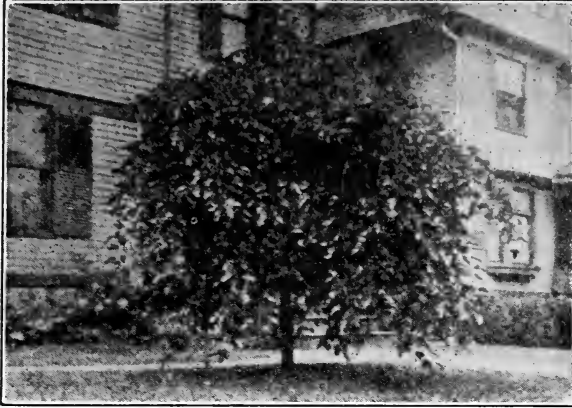
ENGLISH FILBERT—4 to 5 ft., \$1.50

THE LINDENS

AMERICAN—A stately tree. Grows 60 to 80 ft. tall. Its flowers appear in July. 6 to 8 ft., \$2.00

EUROPEAN—Symmetrical growth. Makes a good all purpose tree. 6 to 8 ft., \$2.00

SILVER-LEAF—Leaves are dark green above and silvery-white beneath. The contrast is very effective, making a beautiful lawn specimen. 6 to 8 ft., \$2.50



Weeping Mulberry

WEeping MULBERRY

The most graceful and hardy weeping tree in existence. Forms a perfect shaped head, with long, slender, and willowy branches, drooping to the ground. In light, airy gracefulness, delicacy of form and motion, it is without a rival. It has beautiful foliage, is hardy, safe and easy to transplant. Admirably adapted for small or large grounds, or for cemetery planting. Each, \$3.50

CATALPA BUNGEI

(Umbrella Tree)

Dwarf round head tree used primarily for formal effects. Perfectly hardy, and flourishes in all soils and climates.

5 to 6 feet, \$1.75

AILANTHUS

(Tree of Heaven)

An extremely rapid grower with palm-like leaves. Thrives in soil where most other trees perish.

Each \$2.00

FLOWERING CRAB

Bears delicate pink, perfectly double, rose like flowers of delicious fragrance.

2 to 3 feet, \$1.25

TULIP TREE

One of the grandest of our native trees; of tall pyramidal habit, it bears Tulip like flowers, 1½ to 2 inches long, in May or June.

6 to 8 feet, \$2.00

FLOWERING PEACH

A small tree rarely more than 20 feet tall. In May every branch and twig is covered with beautifully formed flowers, rendering the tree showy and attractive at a great distance. Either red or white flowering.

3 to 4 feet, \$1.50

WHITE BIRCH

European White. Branches slender, with silvery bark. After a few years growth assumes a graceful weeping habit, adding greatly to its charm.

6 to 8 feet, \$1.75

THESE 3 BOOKS

WILL ANSWER YOUR PLANTING PROBLEMS

1001 GARDEN QUESTIONS ANSWERED

**Do You Know—Why Peonies do not bloom? Why Evergreens fail?
Why House Plants are leggy? Why Cut Flowers do not keep?
Why Young Fruit Trees do not bear?**

This information and a wealth of other garden facts; special notes on growing Lilies; up-to-date information on spraying of fruit, perennials, and vegetables; practical notes on the construction of a pool; a thorough and complete calendar of operations; how to breed plants and do your own tree surgery is all told in this wonderful book "1001 Garden Questions Answered."

Cloth bound, 320 pages, beautifully illustrated.

Postpaid only \$2.50

MILADY'S HOUSE PLANTS

Tells how to care for Palms, Ferns, Rubber Plants, Fuchsias, Jerusalem Cherries, and scores of other popular House Plants. Answers all your questions about House Plants. How to pot, drainage, watering, temperature, sunlight, air and other details.

Tells you what plants are adapted for hanging baskets and window boxes; how to arrange effective table center-pieces, and other indoor floral decorations. How to grow bulbs in bowls, etc.

Follow the instructions in this book and the increased beauty and value of your house plants will repay its small cost over and over again.

Cloth bound, profusely illustrated, special only

\$1.50 Postpaid

BULBS THAT BLOOM IN THE SPRING

**The 60 Magnificent Full Plates are worth more than the price asked
for this Charming Book. Cover in four colors**

Written for the amateur, this book gives all the information the home gardener requires to insure success with Tulips, Narcissi, Hyacinths, Lilies, Crocus, Peonies, Iris, and all other bulbs which are planted in the Fall to bloom in the Spring. Order your copy now, it will make pleasant Summer reading and will give you a new and broader view of the beauty you can obtain by Fall Planting for Bloom in the Spring, or at least be sure to include a copy of this book with your order for Fall Bulbs.

Cloth bound, 60 full plate illustrations, only

\$2.50 Postpaid

ALL 3 BOOKS (Value \$6.50) FOR ONLY \$5.75 POSTPAID

PLEASE USE THIS ORDER BLANK
GROWERS' SALES CO., CLINTON, N. J.

Date.....

Please Send To

Town State

Street and No. or R. F. D.

Nearest Express Office

15c Parcel Post Charge Covers cost of packing, mailing, and guaranteed delivery. If shipment fails to reach you we duplicate free of charge.	Amount of Order	\$.....
	Postage and Packing	.15
	Total Remittance	\$.....

QUANTITY

NAME OF ARTICLE

PRICE

TOTAL

EVERGREEN LAWN GRASS SEED

A fine velvety lawn is the first essential and the foundation in beautifying the home surroundings. Beautiful flowers and shrubbery lose much of their charm if they do not have the backing of a well kept lawn. Our EVERGREEN LAWN GRASS SEED is the result of years of untiring study and experimenting; it has stood the test in all parts of the country, stands wear and tear, out-living the severest winters, retaining at all times its lustrous green color. The spring and early summer is the ideal time to sow lawn grass seed. Use 1 quart to every 250 square feet. You cannot sow too much; the more the better. It means quicker results. Per ½ lb. (about 1 qt.) 35c.

For All Plants Use W. S. F. Plant Food Outdoors and In

All growing plants must be fed if you expect them to produce results, and they respond in a remarkable way to proper feeding. Everything you grow depends on fertilization. W. S. F. will make flowering plants bloom freely and hold their blossoms longer; foliage plants quickly put on new growth; vegetable crops, berry bushes, fruit and other trees increase production, so it pays for itself many times over in a season.

Many fertilizers are slow-acting, their percentage of actual plant food ingredients low and unevenly proportioned. W. S. F. is easy to use, producing immediate results.

This wonderful fertilizer and plant food has no obnoxious, messy characteristics. To use, simply mix with water; a half pound package makes two gallons. Feed a little to your plants indoors and out every week to 10 days and watch them grow. Being liquid the rich plant food goes immediately to the plant feeder roots where it is needed. ½ lb. package, 25c; 5 packages for \$1.00.

SULPHO-TOBACCO SOAP

Sure Death to All Insect Life

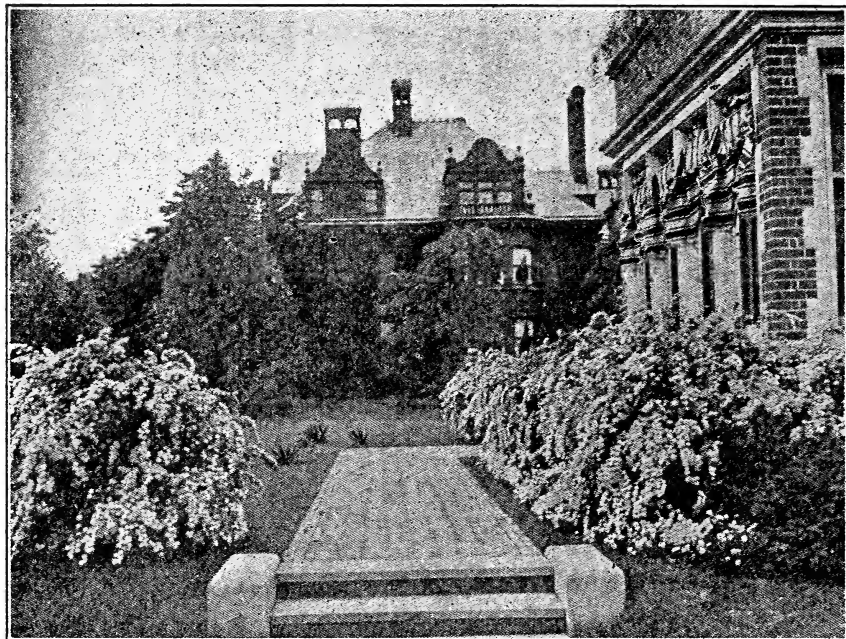
A combination of tobacco extract and sulphur in soap form. A matchless preparation for washing and spraying plants. It dissolves readily in water and will not injure the most delicate plants. 3 oz. cake only 15c, 2 for 25c.

PULVERIZED SHEEP MANURE

It should be used on every lawn. It is also the best manure for the garden and for flowers. REMEMBER THIS: One bag equals a whole wagonload of barnyard manure and there are no weed seeds to cause you trouble. This manure is prepared by special drying, screening and grinding process which destroys every weed and eliminates every bit of worthless bedding and foreign matter. Only the pure fertilizer in most concentrated form is packed in bags for convenient and economical use. Only requires one-half ton to the acre, so a 100 lb. bag will be sufficient for a good sized lawn. If you would have the finest lawn in your neighborhood, the brightest flowers and the most productive garden you may do so at very small expense by using Pulverized Sheep Manure. It makes grass, plants and flowers all "fairly sing for joy." Bag of 100 lbs. by either freight or express, \$4.00; 500 lbs., \$17.50; 1,000 lbs., \$30.00.

TOBACCO DUST

Why grow Roses to feed bugs? As soon as you see the aphid or green plant lice sucking the very life's blood from the tender young shoots of your Roses, and other plants, sprinkle them, and while wet, apply Tobacco Dust to the plants, and these pests are gone. 10 lbs. by prepaid Parcel Post, \$1.25.



Spirea Van Houttei is especially attractive when planted in groups

GREAT SPIREA VAN HOUTTEI SPECIAL

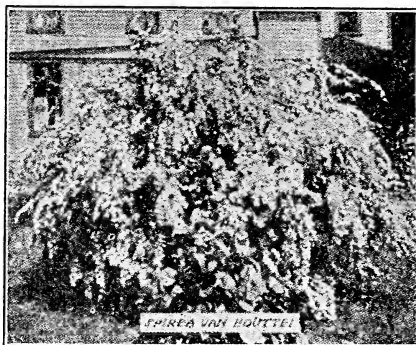
Spirea Van Houttei is one of the best shrubs, the grandest of all the Spireas, and probably the most generally planted. Single specimen are beautiful and effective, but it is the massed planting, as illustrated above, that fairly takes ones breath away with its beauty and charm. A complete fountain of pure white bloom in May and June. Easy to grow, no shrub will add so much beauty, at so little cost, as Spirea Van Houttei. As a Fall Special we are pricing this great shrub so low there is absolutely no reason why you should not make a large planting NOW. Big, 2 year plants, very specially priced.

3 For Only \$1.00 - 6 For Only \$1.85 - 12 FOR only \$3.45

5 Beautiful Flowering SHRUBS Only \$1.25

Here is a SPECIAL BARGAIN SET of big 2 year Shrubs that cannot be excelled for a mixed planting. Five of the most popular and most generally planted varieties at about ½ regular prices. If you have room for shrubbery you surely must include this set in your order.

Spirea Van Houttei.
 Bush Honeysuckle.
 Deutzia, Pride of Rochester.
 Snowberry
 Dogwood.



All 5 Beautiful Flowering Shrubs for only \$1.25

THE STRYKER PRESS
 WASHINGTON, N. J.